

DECK ANCHOR INSERTS

- Concrete Steel Decks
- Wood-Formed Concrete Decks

ISAT

TOTAL SUPPORT

Innovation • Engineering • BIM • Fabrication

Just Push It!

PUSH ROD HANGER

Patented



**America's #1 Original Blue Banger Hanger
Deck Insert Just Got Even Better**

More Efficient Installation
Just Push Rod to Engage (No Turn Threading)

Multi-Threaded Deck Inserts
Fits both 3/8" and 1/2" Threaded Rod

877-999-ISAT (4728) | ISATTS.COM

©2025 ISAT - A Division of Tomarco - All Rights Reserved



Revolutionary Patented Insert Design Beyond the Blue Banger Hanger

US Pat #
US 9,181,691 B2

The Insert that Changed the Anchoring Industry Just Got Even Better

The Push Rod Hanger Inserts were engineered from the original, patented Blue Banger Hanger. The Push Rod overhead attachment system features a revolutionary patented auto-lock chamber that locks in threaded rod. Installers will quickly realize the benefits of simply pushing threaded rod into the Push Rod auto-lock insert instead of turn threading.

Patented Push Rod ATR

Factory Crimped Engagement Markings

The Push Rod ATR include patented engagement markings that confirm full engagement. No second guessing, no installer error. Plus, just like the Blue Banger Hangers, Push Rod Hangers reduce inventory because each insert accommodates multiple rod sizes that can be changed after installation.

How's that for innovation?

Factory Crimped Engagement Markings (Optional)



Takes the guess work out of installation

NO INSTALLER ERROR

Factory preassembled rods with engagement markings

Insert threaded rod until it bottoms out in the insert body

Threaded rod with engagement marking is optional. Standard threaded rod may be used for all Push Rod inserts

Refer to ESR-3599 for full installation instructions



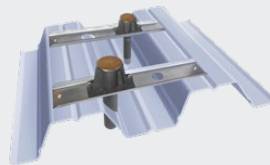
Push Rod Hanger Product Index



PRSDI-2
Steel Deck Insert
For use with steel concrete decks



PRPIP
Poured-In-Place
For wood-formed concrete decks



FSB-X
Flute Span Bracket
Use when installing PRSDI-2 between steel flutes



1/2" & 3/8"
Push Rod ATR
Use with PRSDI-2 or PRPIP



1/2" & 3/8"
Push Rod ATR Stud
Use with PRSDI-2 or PRPIP



Learn More



Scan the QR Code or Visit isatts.com/push-rods

- Reduces Inventory
- Installs Fast & Secure
- Easily Change Rod Sizes
- No Drilling Concrete
- No Using Rod Couplers
- No Special Inspection
- No Installer Error



Revolutionary Push Rod Overhead Attachment System

*How do you increase field installation efficiency?
Use the Push Rod Overhead Attachment System!!!*

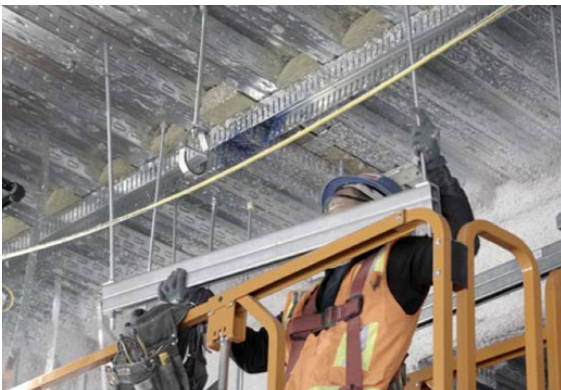


Material Arrives to Jobsite Ready for Installation

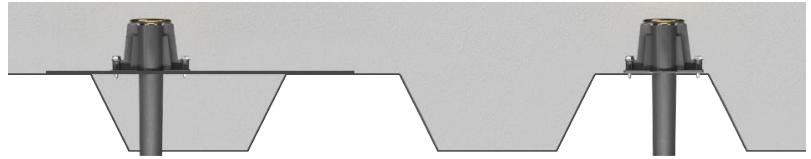
Supports are Designed and Constructed to the Industry's Highest Standards



Trapeze and Assemblies Labeled to Correspond with Location Specific Drawings



Just Push It!!!

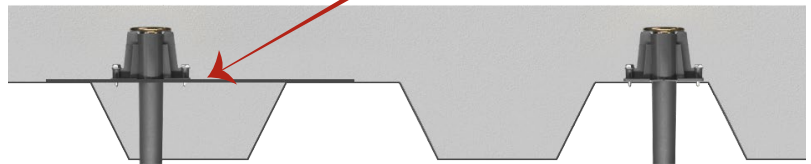


Just Push It!!!

All Hardware is Fully Tightened



Flute Span Bracket Enables Rods on Off-Site Manufactured Trapezes to be Ordered to the Same Length Without Field Adjustment



When used in combination with ISAT's Blue Banger Hanger Push Rod insert, installation is further streamlined by providing fast, safe, and toolless connection to the structure. Blue Banger Hanger inserts are code approved (ESR-3599) for a wide variety of materials and construction methods, offering a versatile solution that can be seamlessly integrated into virtually any project.



PRSDI-2 - Steel Deck Insert

For Pre-Poured Concrete Steel Decks

The new PRSDI-2 is ICC qualified for W3 and B Decks with concrete topping down to 1-1/2" when installed in lower flute and 2-1/2" when installed in the upper flute. PRSDI-2's are installed prior to pouring, reducing installation and material costs while increasing strength values (ideal for gravity and seismic anchorage).

Multiple Internal Threads

- No threading - simply push rod (installs fast and secure)
- Fits both 3/8" and 1/2" threaded rod - reduces inventory
- Allows for threaded rod size changes
- Eliminate the need for, and cost of, couplings

Patented Push Rod ATR (Optional)

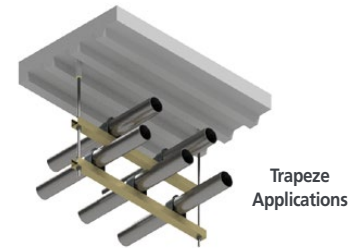
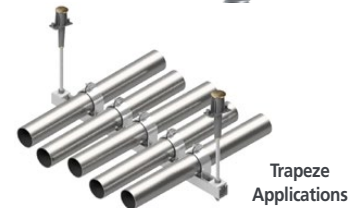
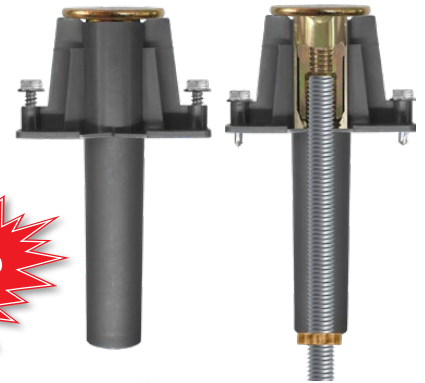
- Engagement markings confirm full engagement (eliminates guessing)
- Allows for visual inspection to verify rod is installed correctly

Machined Steel Insert with Large Flanged Head

- Provides excellent pullout capacity for overhead attachments
- Qualified for use in W-deck and B-deck
- Improved shallow topping slab requirements (1-1/2" when installed in lower flute, 2-1/2" when installed in upper flute)

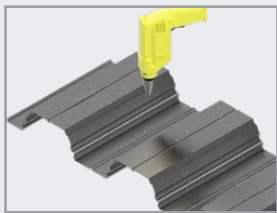
Three Inch Plastic Sleeve

- Keeps internal threads clean
- Extended length makes insert easy to locate, even with fireproofing below the deck
- Plastic sleeve provides guidance to align threaded rod with internal autolock chamber

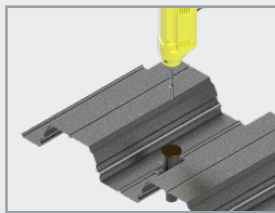


Part #	Rod Sizes	Description	Hole Dia.	Box Qty.
PRSDI3812-2	3/8", 1/2"	Push Rod Steel Deck Insert	1-1/8" - 1-13/16"	50
Add "BAA" to the end of the part number for the Buy American Act compliant insert				

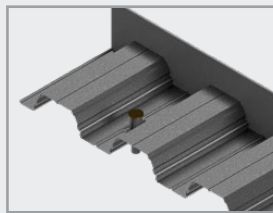
Easy Installation (See Installation Tools - Page 7)



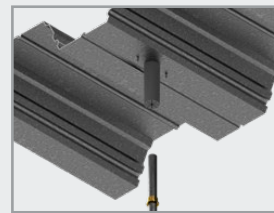
Drill it



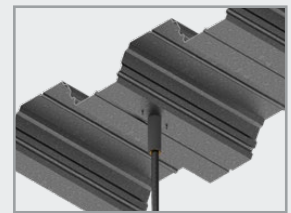
Screw to Deck



Pour Concrete



Push Rod
(Shown with optional engagement marking)



Confirm Engagement
(Pull down on rod to confirm engagement)

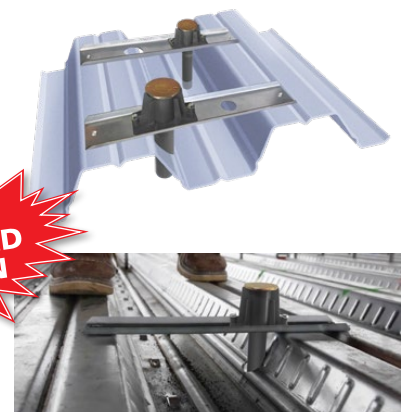
FSB-X - Flute Span Bracket

NEW One FSB-X Now Fit All Size PRSDI-2 Push Rods

Allows the SDI-2 to be installed on the inside of the flutes!

- Enables the insert to realize the higher capacity that is achieved in the upper flute
- Positions all inserts on the project at the same elevation to eliminate multiple threaded rod lengths
- Improves the accuracy of off site prefabrication

Part #	Description	Box Qty.
FSBX	Flute Span Bracket	25





PRPIP - Poured-In-Place

For Wood Formed Concrete Decks

Pour-in-Place inserts are used on wood form poured decks and installed prior to pouring concrete, reducing installation and material costs.

Multiple Internal Threads

- No threading - simply push rod (installs fast and secure)
- Fits both 3/8" and 1/2" threaded rod - reduces inventory
- Allows for threaded rod size changes
- Eliminate the need for, and cost of, couplings

Large Plastic Base with Slurry Seal

- Angled ridges protect the head of the insert from rebar during deck work
- Larger plastic base ensures that the insert is installed flush to the deck to prevent concrete from contaminating the inner threads during the concrete pour
- Slurry seal safeguards the internal threads during the concrete pour
- Red, white and blue colored slurry seal labels identify the insert when used by multiple trades

Machined Steel Insert with Large Flanged Head and Nails

- Provides excellent shear values for overhead attachments
- Insert installed height of two inches complies with typical design specifications
- Nails easily break off



Before Hammer Blow

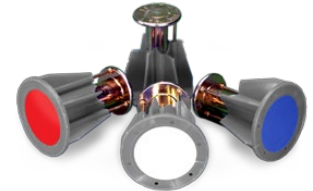


After Hammer Blow



Fits Both 3/8" and 1/2" Threaded Rod

Red, White, and Blue Colored Slurry Seals Identify Trades



Part #	Rod Sizes	Description	Box Qty.
PRPIP3812RED	3/8", 1/2"	Poured-In-Place Insert	50
PRPIP3812WHITE	3/8", 1/2"	Poured-In-Place Insert	50
PRPIP3812BLUE	3/8", 1/2"	Poured-In-Place Insert	50

Add "BAA" to the end of the part number for the Buy American Act compliant insert



55% Larger 2-3/8" Base Compared to Typical Competitor Small 1-5/16" - 1-1/2" Base



Angled Edges Help Prevent Damage Caused by Rebar



Slurry Seal Prevents Concrete Contamination

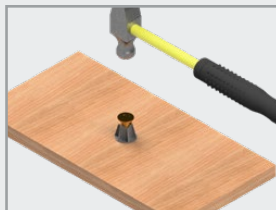


Single Rod Applications

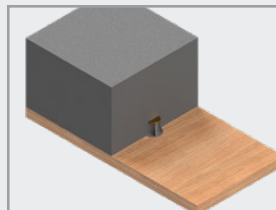


Trapeze Applications

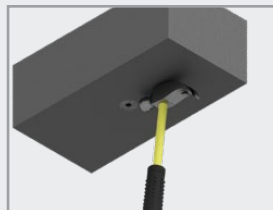
Easy Installation (See Installation Tools - Page 7)



Hammer to Wood Form



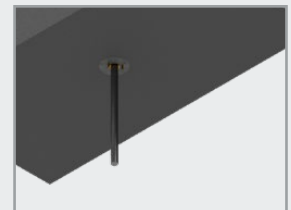
Pour Concrete



Remove Wood Form and Break Off Nails



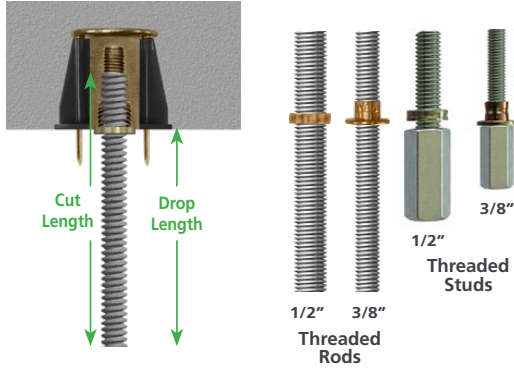
Push Rod (Shown with optional engagement marking)



Confirm Engagement (Pull down on rod to confirm engagement)

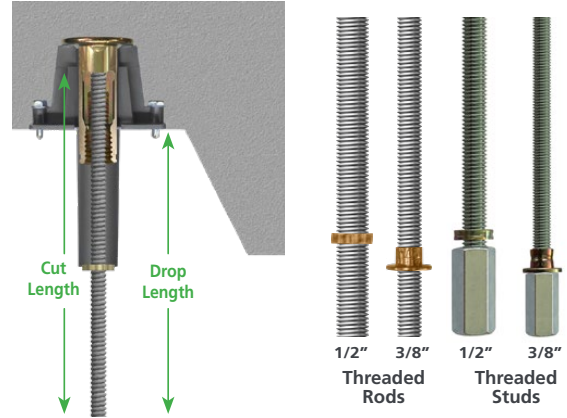
Push Rod - PRPIP3812

With Factory Crimped Engagement Mark



Push Rod - PRSDI3812-2

With Factory Crimped Engagement Mark



3/8" Threaded Rod with Engagement Markings for PRPIP3812			
QTY	Part Number	Description	
	CEA-PRPIPR3824	PRPIP Threaded Rod - 3/8" x 24" (25-34")	
	CEA-PRPIPR3836	PRPIP Threaded Rod - 3/8" x 36" (37-34")	
	CEA-PRPIPR3848	PRPIP Threaded Rod - 3/8" x 48" (49-34")	
	CEA-PRPIPR3860	PRPIP Threaded Rod - 3/8" x 60" (61-34")	
	CEA-PRPIPR3872	PRPIP Threaded Rod - 3/8" x 72" (73-34")	
	CEA-PRPIPR3884	PRPIP Threaded Rod - 3/8" x 84" (85-34")	
	CEA-PRPIPR3896	PRPIP Threaded Rod - 3/8" x 96" (97-34")	
	CEA-PRPIPR38108	PRPIP Threaded Rod - 3/8" x 108" (109-34")	
	CEA-PRPIPR38118	PRPIP Threaded Rod - 3/8" x 118" (120")	
1/2" Threaded Rod with Engagement Markings for PRPIP3812			
QTY	Part Number	Description	
	CEA-PRPIPR1224	PRPIP Threaded Rod - 3/8" x 24" (25-34")	
	CEA-PRPIPR1236	PRPIP Threaded Rod - 3/8" x 36" (37-34")	
	CEA-PRPIPR1248	PRPIP Threaded Rod - 3/8" x 48" (49-34")	
	CEA-PRPIPR1260	PRPIP Threaded Rod - 3/8" x 60" (61-34")	
	CEA-PRPIPR1272	PRPIP Threaded Rod - 3/8" x 72" (73-34")	
	CEA-PRPIPR1284	PRPIP Threaded Rod - 3/8" x 84" (85-34")	
	CEA-PRPIPR1296	PRPIP Threaded Rod - 3/8" x 96" (97-34")	
	CEA-PRPIPR12108	PRPIP Threaded Rod - 3/8" x 108" (109-34")	
	CEA-PRPIPR12118	PRPIP Threaded Rod - 3/8" x 118" (120")	
Custom Threaded Rod Lengths			
QTY	Part Number	Rod Diameter	Length (Inches)
	CEA-PRPIPR		
	CEA-PRPIPR		
	CEA-PRPIPR		
Threaded Studs			
QTY	Part Number	Description	
	CEA-PRPIPS3814	PRPIP Threaded Studs - 3/8" x 1/4"	
	CEA-PRPIPS3838	PRPIP Threaded Studs - 3/8" x 3/8"	
	CEA-PRPIPS1212	PRPIP Threaded Studs - 1/2" x 1/2"	
	CEA-PRPIPS1258	PRPIP Threaded Studs - 1/2" x 5/8"	

3/8" Threaded Rod with Engagement Markings for PRSDI3812-2			
QTY	Part Number	Description	
	CEA-PRSDI2-R3824	PRSDI2 Threaded Rod - 3/8" x 24" (25-34")	
	CEA-PRSDI2-R3836	PRSDI2 Threaded Rod - 3/8" x 36" (37-34")	
	CEA-PRSDI2-R3848	PRSDI2 Threaded Rod - 3/8" x 48" (49-34")	
	CEA-PRSDI2-R3860	PRSDI2 Threaded Rod - 3/8" x 60" (61-34")	
	CEA-PRSDI2-R3872	PRSDI2 Threaded Rod - 3/8" x 72" (73-34")	
	CEA-PRSDI2-R3884	PRSDI2 Threaded Rod - 3/8" x 84" (85-34")	
	CEA-PRSDI2-R3896	PRSDI2 Threaded Rod - 3/8" x 96" (97-34")	
	CEA-PRSDI2-R38108	PRSDI2 Threaded Rod - 3/8" x 108" (109-34")	
	CEA-PRSDI2-R38118	PRSDI2 Threaded Rod - 3/8" x 118" (120")	
1/2" Threaded Rod with Engagement Markings for PRSDI3812-2			
QTY	Part Number	Description	
	CEA-PRSDI2-R1224	PRSDI2 Threaded Rod - 3/8" x 24" (25-34")	
	CEA-PRSDI2-R1236	PRSDI2 Threaded Rod - 3/8" x 36" (37-34")	
	CEA-PRSDI2-R1248	PRSDI2 Threaded Rod - 3/8" x 48" (49-34")	
	CEA-PRSDI2-R1260	PRSDI2 Threaded Rod - 3/8" x 60" (61-34")	
	CEA-PRSDI2-R1272	PRSDI2 Threaded Rod - 3/8" x 72" (73-34")	
	CEA-PRSDI2-R1284	PRSDI2 Threaded Rod - 3/8" x 84" (85-34")	
	CEA-PRSDI2-R1296	PRSDI2 Threaded Rod - 3/8" x 96" (97-34")	
	CEA-PRSDI2-R12108	PRSDI2 Threaded Rod - 3/8" x 108" (109-34")	
	CEA-PRSDI2-R12118	PRSDI2 Threaded Rod - 3/8" x 118" (120")	
Custom Threaded Rod Lengths			
QTY	Part Number	Rod Diameter	Length (Inches)
	CEA-PRSDI2		
	CEA-PRSDI2		
	CEA-PRSDI2		
Threaded Studs			
QTY	Part Number	Description	
	CEA-PRSDI2-53814	PRSDI2 Threaded Studs - 3/8" x 1/4"	
	CEA-PRSDI2-53838	PRSDI2 Threaded Studs - 3/8" x 3/8"	
	CEA-PRSDI2-51212	PRSDI2 Threaded Studs - 1/2" x 1/2"	
	CEA-PRSDI2-51258	PRSDI2 Threaded Studs - 1/2" x 5/8"	

Order Form

**All orders are custom and cannot be canceled or returned.

Contractor:	Project Name and Address:
PO#	Order Date:





Installation Tools and Accessories

- Everything you need to make installation easy
- Increases productivity
- Better leverage reduces back and shoulder pain

Key	Part #	Description
A	CEA-POLMKEY36	3'-6" Telescoping Pole with Keyless Chuck
B ¹	CEA-SDDHS1	24" Deck Driller with 13/16" Hole Saw
C ²	CEA-SDDHS2	24" Deck Driller with 1-3/16" Hole Saw
D ¹	CEA-SDDCHS1	24" Deck Driller with 13/16" Carbide Tipped Hole Saw
E ²	CEA-SDDCHS2	24" Deck Driller with 1-3/16" Carbide Tipped Hole Saw
F ³	CEA-SDDSB4	24" Deck Driller with 3/16" - 7/8" Step Drill Bit
G ²	CEA-SDDSB5	24" Deck driller with 1/4" - 1-3/8" Step Drill Bit
H ¹	CEA-BBDPUNI8125	Universal Deck Punch with 13/16" Tip
I ²	CEA-BBDPUNI1.187	Universal Deck Punch with 1-3/16" Tip
J	CEA-BBDPUNIMS114	Universal Deck Punch with 1-1/4" Metal Strap Tip
K ³	CEA-PIPINSTALL2	PIP Installation Pole for ALL SIZE PIPs
Replacement Parts		
L ¹	MKM-MHS13	13/16" Hole Saw
M ²	MKM-MHS19	1-3/16" Hole Saw
N ¹	MKM-CTS13	13/16" Carbide Tipped Hole Saw
O ²	MKM-CTS19	1-3/16" Carbide Tipped Hole Saw
P ¹	CEA-SB4	3/16" - 7/8" Step Drill Bit
Q ²	CEA-SB5	1/4" - 1-3/8" Step Drill Bit
R ¹	CEA-DPTQR8125	13/16" Universal Deck Punch Tip
S ²	CEA-DPTQR1187	1-3/16" Universal Deck Punch Tip
T	CEA-DPTQRMS114	1-1/4" Metal Strap Universal Deck Punch Tip
1 - For use with SDI143812, SDI143812-2, and RDI-143812 2 - For use with SDI381258, SDI381258-2, SDI5834, SDI5834-2, PRSDI3812, and PRSDI3812-2 3 - For use with Baby Blue, PIP143812, PIP38125, PIP5834 & PRPIP3812		

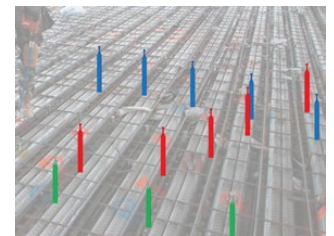


ID Tabs

- Saves time - quick installation
- Eliminates confusion between multiple trades
- Uses a marker or adhere labels
- Provides easy identification from the ground



Part #	Description
HEA-PT 38125A	Fluorescent Yellow
HEA-PT 38125B	Fluorescent Pink
HEA-PT 38125C	Fluorescent Blue
HEA-PT 38125D	Fluorescent Purple
HEA-PT 38125E	Fluorescent Red
HEA-PT 38125F	Fluorescent Orange
HEA-PT 38125G	White
HEA-PT 38125H	Green (Pms 354)
HEA-PT 38125I	Brown (Pms 469)
HEA-PT 38125J	Grey (Cool Grey)
HEA-PT 38125K	Grey (Cool Grey)
HEA-PT 38125L	Fluorescent Green





Arizona

3545 S 28th Street Building A
Phoenix, AZ 85040
PH: 602-470-0505

California (Fremont)

412 Kato Terrace
Fremont, CA 94539
PH: 510-657-1111

California (Sacramento)

8169 Alpine Ave, Ste D
Sacramento, CA 95826
PH: 916-732-2424

California (San Diego)

6490 Marindustry Dr, Ste C
San Diego, CA 92121
PH: 858-547-0700

Nevada

6355 W Maule Ave, Ste 100
Las Vegas, NV 89118
PH: 702-364-2606

New York

18-28 42nd Street
Astoria, NY 11105
PH: 212-259-0440

North Carolina

1020 Crews Rd, Ste Q & P
Matthews, NC 28105
PH: 704-841-4080

Ohio

100 W Old Wilson Bridge Rd, Ste 201
Columbus, OH 43085
PH: 440-444-3550

Oregon

14325 NE Airport Way, Ste 101
Portland, OR 97230
PH: 503-252-4423

Texas

2500 S. Hwy 183, Bldg 4, Ste 400
Austin, TX 78744
PH: 512-910-4500

Texas

1718 N Fry Rd, Suite #118
Houston, TX 77041
PH: 281-456-3421

Washington

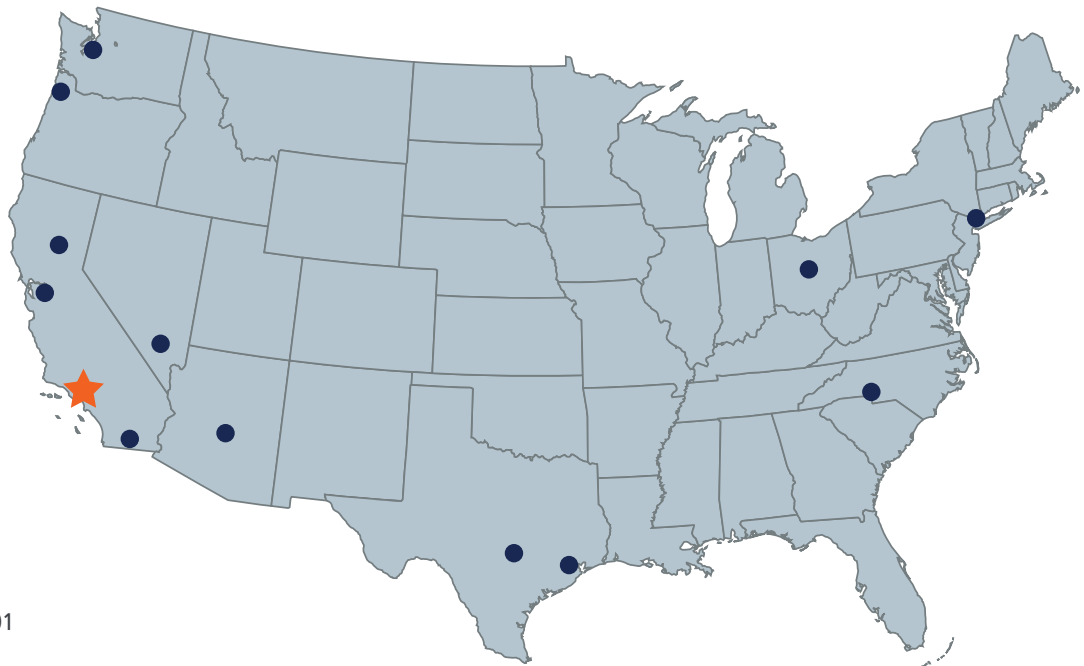
3107 142nd Ave East, Ste 102
Sumner, WA 98390
PH: 253-926-2250



America's #1 Patented Push Rod Anchor Inserts

Concrete Steel Decks • Wood Formed Concrete Decks

US Pat # US 9,181,691 B2



CORPORATE HEADQUARTERS

Inside US: 877-999-ISAT (4728)

Outside US: 00-1-714-880-3024

SERVICES@ISATTS.COM | ISATTS.COM

16050 Canary Ave., La Mirada, CA 90638



Serving the Construction Industry Since 1977

©2025 ISAT Total Support - All Rights Reserved