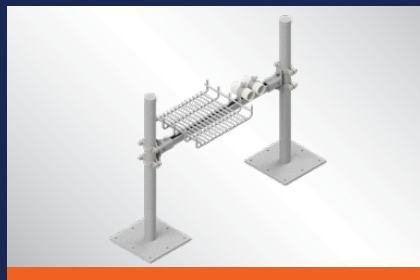




# ***Rapid Roof***

***Support System***



Innovation



Engineering



BIM



Fabrication

877-999-ISAT (4728) | [supports@isatts.com](mailto:supports@isatts.com)

*A Division of Tomarco Contractor Specialties Inc.*

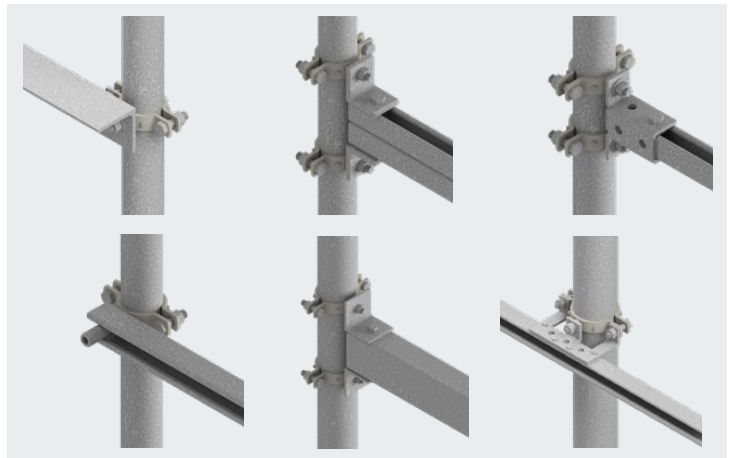
## ISAT's Rapid Roof Support System

ISAT's Rapid Roof Support System is revolutionizing the way that equipment and distributed utilities are supported. No other system can provide the speed, flexibility and strength of the Rapid Roof System. Because of our system's unique modular design, it can adapt quickly and easily to meet virtually any project requirement.

- ISAT's Universal Stanchion Clamp (USC) Provides Field Flexibility and Adjustability
- ISAT Pipe Stanchion (PS) and Stanchion Base (SB) Supports in Stock for Quick Delivery
- ISAT's Universal Shelf Bracket (USB) Provides Single Post Support Options
- 100% Bolt Up Construction - No Welding Required
- All Support Members are Precut and Prepunched for Ease of Assembly in the Field



Universal Stanchion Clamp USC  
(Patent Pending)

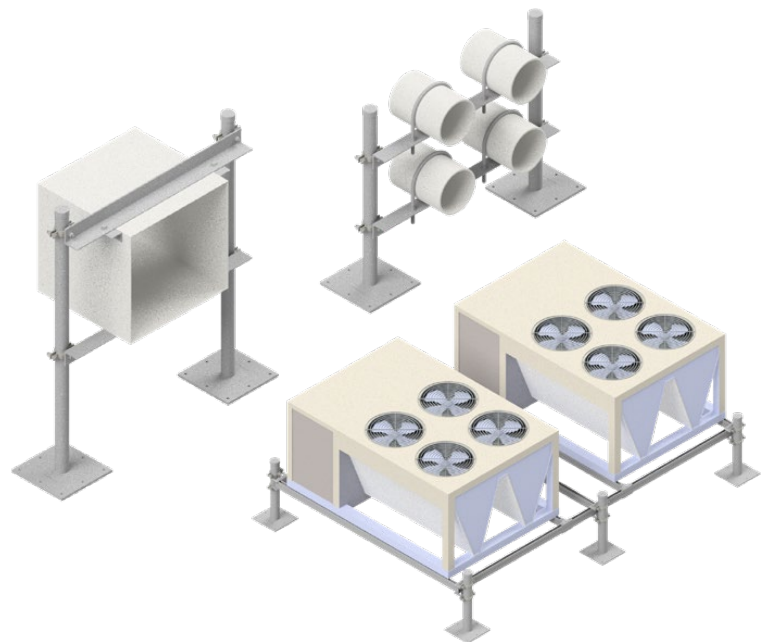


USC Clamps onto ISAT Pipe Stanchions - Weldless Connection.  
Works with Strut, Angle or Square Tube.

## ISAT's Rapid Roof Support System

The International Building Code (IBC) requires that rooftop equipment and distributed utility systems are positively attached to the structure to resist loads caused by seismic, wind and gravity forces. PE stamped submittal and layout drawings are required to analyze the forces and ensure that all supports are designed to resist the anticipated loads.

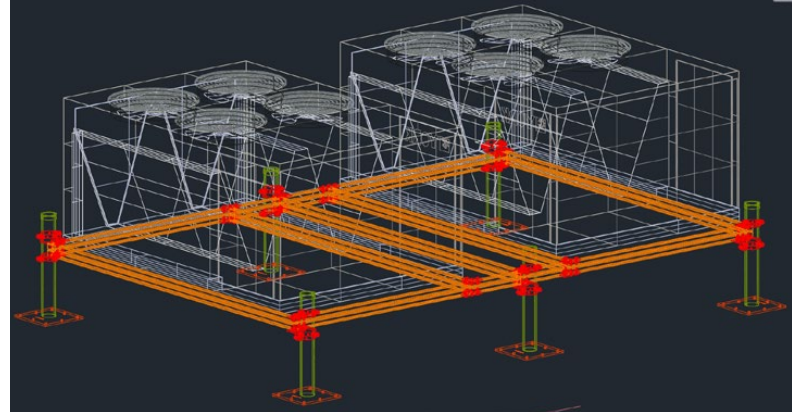
- ISAT Engineers Work with Customers to Value Engineer the Ideal Support Solution
- Pre-Engineered and PE Stamped Design Documents Reduce Turnaround Time
- 2D and 3D Design Layout Services
- Full Suite of Revit Families Available for all Supports



Fully Engineered Support Solutions for  
MEP Utilities (Pipe, Duct & Conduit) Equipment

## Revit Families Available For All Rapid Roof Assemblies and Sub Components

- Free Revit Families for the Rapid Roof Support System (Contact Your ISAT Rep)
- Families are LOD 400 & Fully Parametric
- Individual Components can be Assembled to Create Custom Support Solutions
- Extract Support Information Directly from Revit to Simplify the Ordering Process



## The Rapid Roof System Is Fully Engineered To Resist Gravity, Wind, Seismic, and Thermal Forces

**DEWALT POWER STYL**  
4,000 PSI NWC W/ MIN. 3-1/4" COVER

**ISAT 3" UNIVERSAL SHELF BRACKET (USB3)**

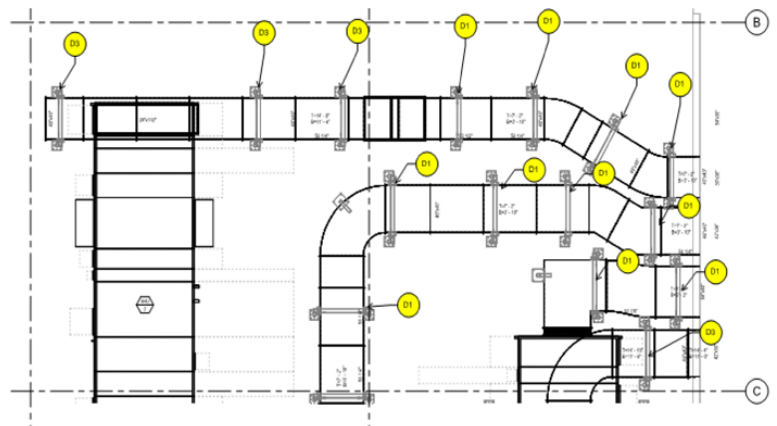
**ISAT UNIVERSAL STANCHION CLAMP (USC) - TECHNICAL DATA**

STANCHION	POST NUMBER	POST CLAMP DIA.	MINIMUM BULKHEAD
104	104	104	104
106	106	106	106
108	108	108	108
110	110	110	110
112	112	112	112
114	114	114	114
116	116	116	116
118	118	118	118
120	120	120	120
122	122	122	122
124	124	124	124
126	126	126	126
128	128	128	128
130	130	130	130
132	132	132	132
134	134	134	134
136	136	136	136
138	138	138	138
140	140	140	140
142	142	142	142
144	144	144	144
146	146	146	146
148	148	148	148
150	150	150	150

- All Data Is Backed Up By Engineering Analysis and Lab Testing (Available Upon Request)
- PE Stamped Product Submittal Documents For Every Component
- Pre-Engineered Concrete Anchorage Details For Most Common Applications
- Proprietary Cast-in-Place Anchor Solutions Eliminate Concrete Drilling and Setting of Anchors in the Field
- Custom Engineered Support Solutions

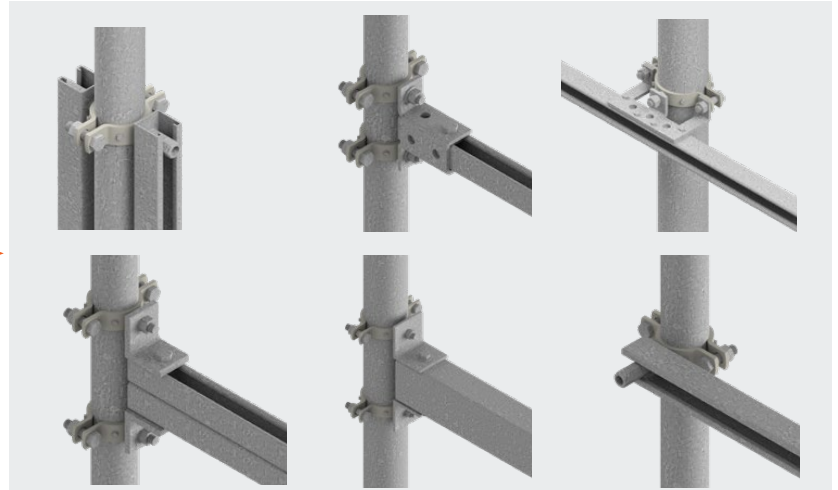
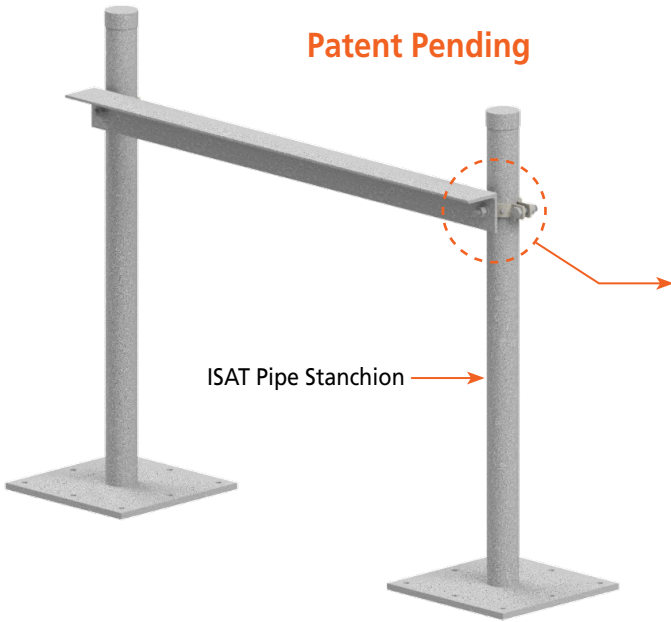
## ISAT's In-House Engineering and VDC Staff Can Fully Engineer and Coordinate Your Support Design

- Value Engineered Design to Meet Contractor and Project Requirements
- PE Stamped Detail for Each Support Type
- 2D or 3D Support Layout Drawings with Support Tagging
- Supports are Shipped with Corresponding Tag for Ease of Install
- Estimating Services Available



# ISAT Universal Stanchion Clamp (USC)

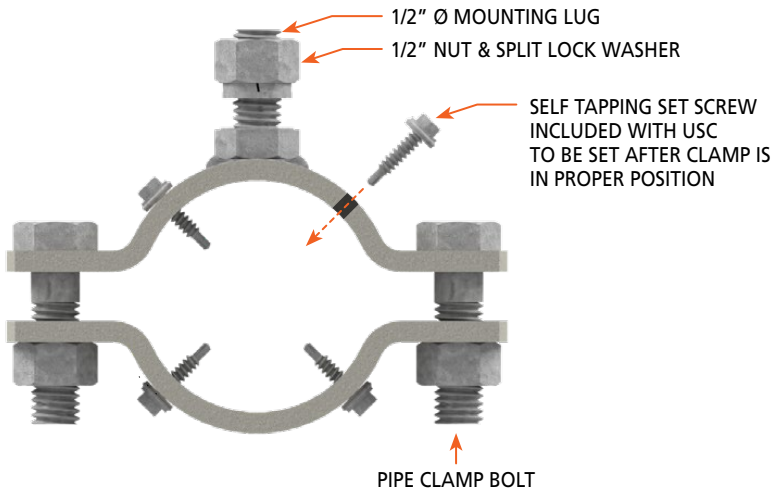
The Weldless Stanchion Connection for Every Application



Multi-Use Design Accepts Hangers, Strut, Angle Brackets

## ISAT (USC) Clamp is Manufactured with 1/2" Mounting Lugs

- No Welding, Simply Clamp in Place
- 1,200 Lb. Capacity Per USC for Gravity Loads
- Wind and Seismically Rated and Tested
- Predrilled Holes in USC to Accept Set Screws
- Single and Double Sided Mounting Lugs
- A36 Steel - Hot Dipped Galvanized - ASTM 123 GRADE 55



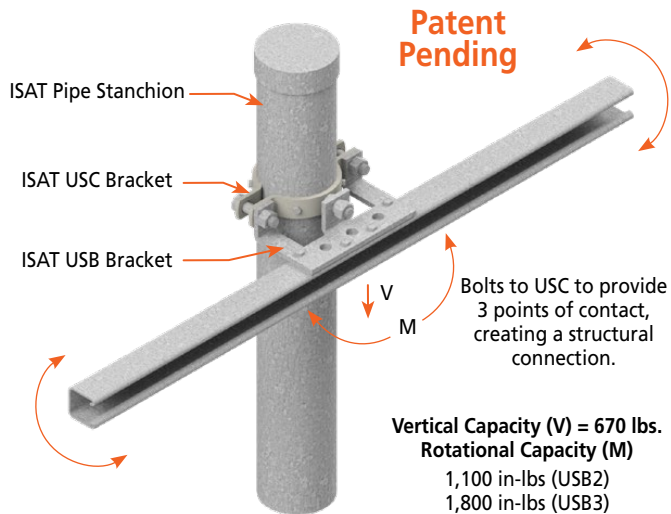
Neoprene washer and under wrap creates a water tight barrier.

## Ordering Information

Part #	ISAT Pipe Stanchion Dia.	Mounting Legs	Pipe Clamp Bolt	
			Dia. (in.)	Install Torque
USC2	2"	Single	1/2"	50
USCD2		Double		
USC3	3"	Single	5/8"	65
USCD3		Double		
USC4	4"	Single	5/8"	65
USCD4		Double		

# ISAT Universal Shelf Bracket (USB)

Single Post Shelf Bracket that Provides Strength In All Directions



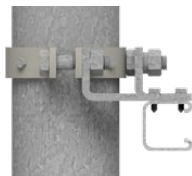
ISAT's Universal Shelf Bracket (USB) bolts on the USC to create a single post work platform that can resist loads in all directions.

Traditionally, this would only be possible with a welded connection or with a two-post design.

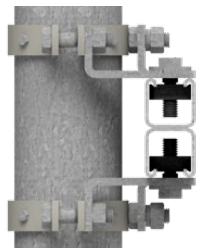
- **USB2:** Works with ISAT 2" USC & Stanchion
- **USB3:** Works with ISAT 3" USC & Stanchion



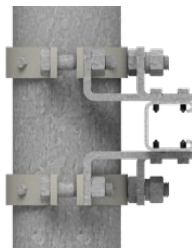
SINGLE STRUT - FACING UP OR DOWN  
STANDARD CAPACITY



SINGLE STRUT - FACING OUT  
STANDARD CAPACITY



B2B STRUT  
EXTRA HEAVY CAPACITY



SINGLE STRUT - FACING OUT  
EXTRA HEAVY CAPACITY

**Single Post Design Results in 50% Reduction of:**

- Roof Penetrations
- Support Material
- Anchor Installation
- Freight Cost
- Laydown Area
- Installation Time

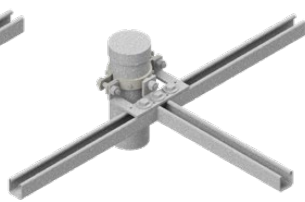
VS

VS

**Use The USB To Build Equipment Surrounds, Catwalks, Platforms, Equipment Bases, Etc.**



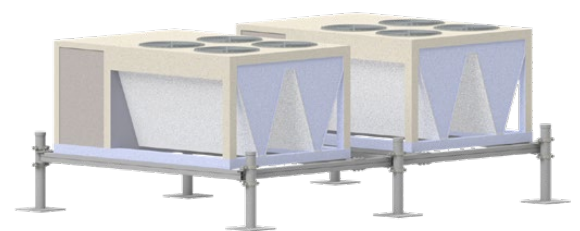
SPLICE OR INTERMEDIATE  
SUPPORT



T-CONNECTION



CORNER CONNECTION

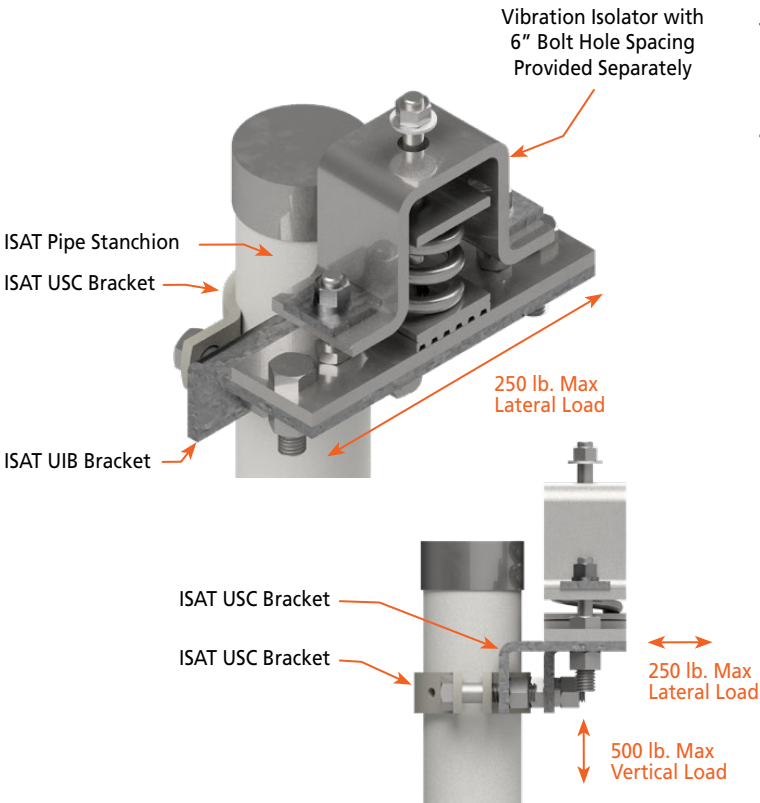


# ISAT Universal Isolator Bracket (UIB)

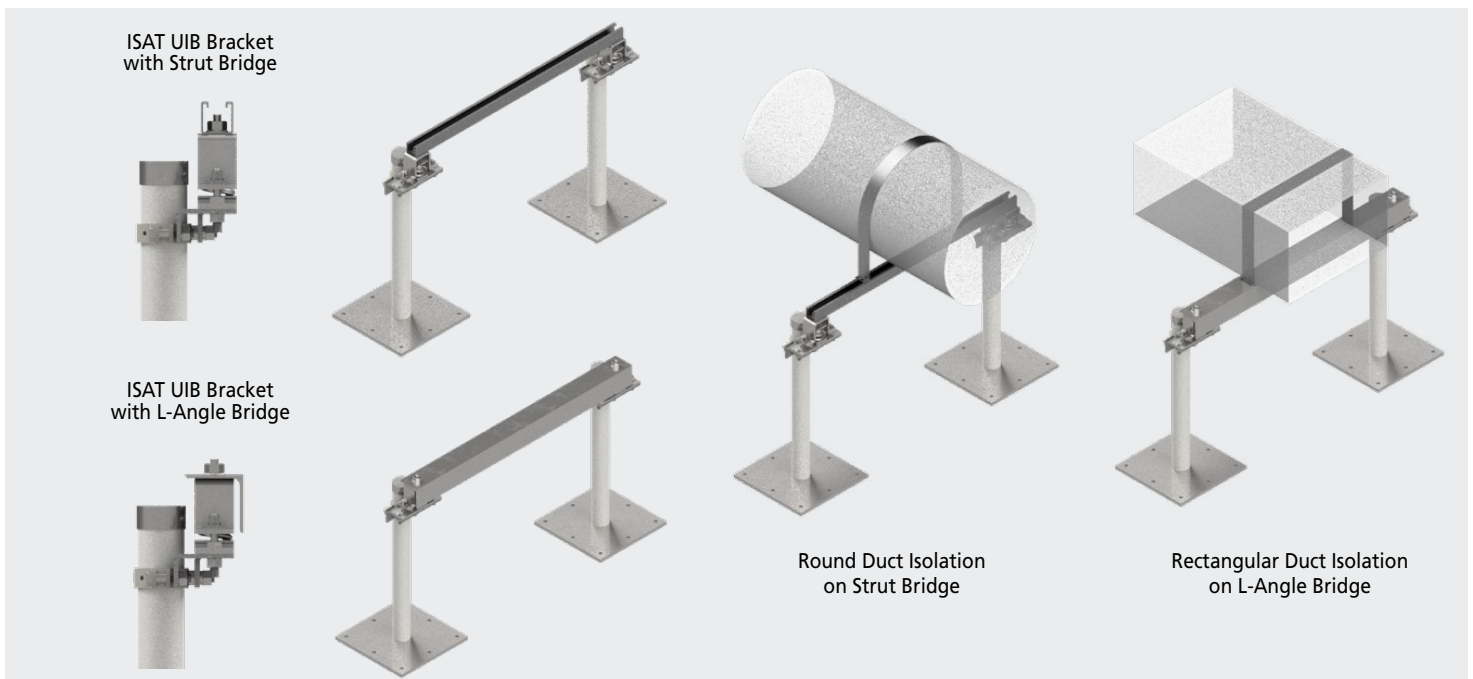
Single Post Shelf Bracket that Provides Strength In All Directions

ISAT's Universal Isolator Bracket (UIB) bolts on to the USC to create a platform to reduce the transmission of noise and vibration into supporting structures from supported mechanical equipment.

The ISAT UIB is designed to work with any Spring isolator housing having a 6" bolt hole pattern, including the Kinetics KCI and Caldwin JQ Isolators

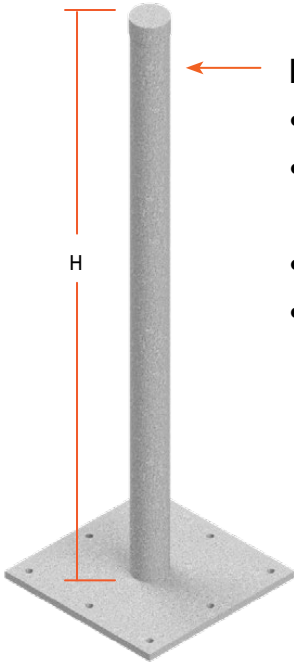


- **UIB2:** Works with ISAT 2" USC & Stanchion
- **UIB3:** Works with ISAT 3" USC & Stanchion
- **UIB4:** Works with ISAT 4" USC & Stanchion



# ISAT Stanchion

Pre-Engineered and Available In Stock



## ISAT Pipe Stanchion (PS)

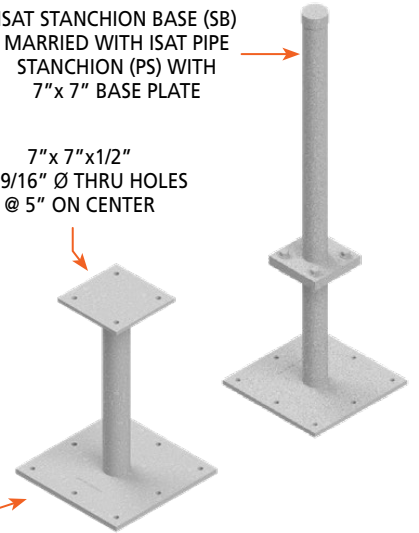
- Available in 2", 3" and 4" Nominal Diameters
- Standard Heights in 12" Increments (Stocked to 10' Height, Custom Heights Available Upon Request)
- Galvanized Top Cap Included
- Hot Dipped Galvanized - ASTM 123 GRADE 55

## ISAT Pipe Stanchion Base (SB)

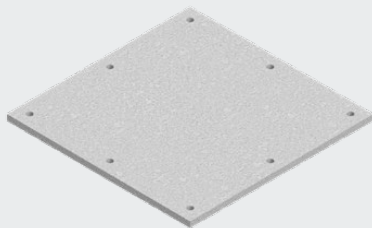
- Available in 2", 3" and 4" Nominal Diameters
- 12", 18" & 24" Standard Heights (Custom Heights Available Upon Request)
- May be Used as Anchor Point for Bracing or Guy Wires
- Marries with ISAT Stanchion w/ 7"x7" Base Plate and (4) 1/2" Bolted Connection
- Hot Dipped Galvanized - ASTM 123 GRADE 55

ISAT STANCHION BASE (SB)  
MARRIED WITH ISAT PIPE  
STANCHION (PS) WITH  
7" x 7" BASE PLATE

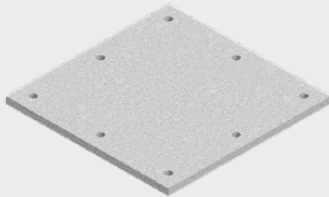
7" x 7" x 1/2"  
(4) 9/16" Ø THRU HOLES  
@ 5" ON CENTER



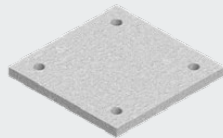
### Base Plate Options



16" X 16" X 1/2"  
(8) 9/16" Ø THRU HOLES  
@ 7" ON CENTER



12" X 12" X 1/2"  
(8) 9/16" Ø THRU HOLES  
@ 5" ON CENTER



7" X 7" X 1/2"  
(4) 9/16" Ø THRU HOLES  
@ 5" ON CENTER

#### Optional Neoprene Baseplate Pad

Add "N" to the end of the part number to order stanchion with a 1/4" thick neoprene pad adhered to the bottom side of the baseplate.  
Custom baseplate sizes available upon request.

## Ordering Information

Model	Stanchion Dia.	Stanchion Height	Base Plate
PS	2", 3" or 4"	Standard Heights in 12" Increments. Custom Heights Available	00 - None
			77 - 7"x7"
			1212 - 12"x12"
			1616 - 16"x16"
SB	2", 3" or 4"	Standard Heights 12", 18" or 24". Custom Heights Available	00 - None
			77 - 7"x7"
			1212 - 12"x12"
			1616 - 16"x16"

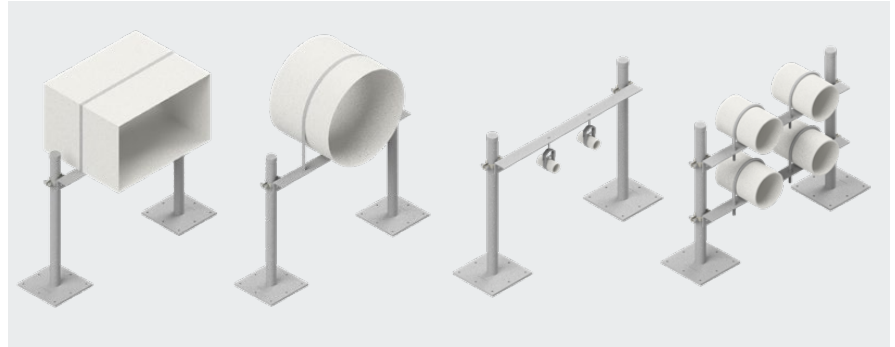
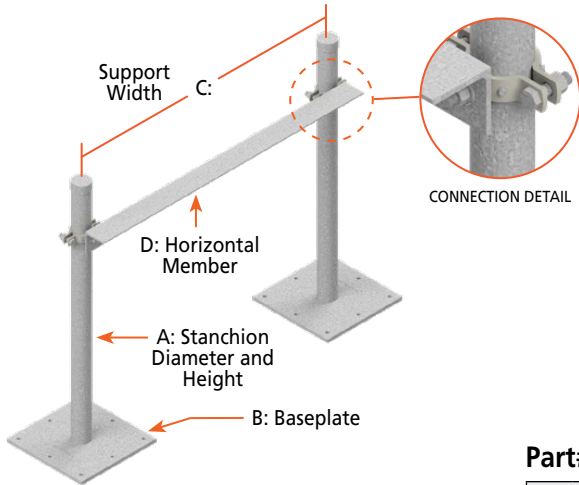
MAX. LATERAL FORCE (P) LBS.							
HEIGHT (H) INCHES	NOMINAL STANCHION DIA.			HEIGHT (H) INCHES	NOMINAL STANCHION DIA.		
	2"	3"	4"		2"	3"	4"
12	916	2,020	3,416	72	115	336	569
18	611	1,347	2,277	78		310	525
24	458	1,010	1,708	84		288	488
30	366	808	1,366	90		255	455
36	305	673	1,138	96		210	427
42	261	577	976	102		175	401
48	223	505	854	108		147	353
54	203	449	759	114			300
60	166	404	683	120			257
66	137	367	621				

## PFL Assembly

Post Frame - L-Member

Suitable For: Round or Rectangular Duct & Piping Systems

Assembly Contains: Stanchions, USC's, Horizontal "L" Members, Connection Hardware



Part#: PFL - A, B, C, D, E

- Support Shipped Partially Assembled (Field Assembly Is Required)
- Horizontal Member Cut To Length and Pre-drilled To Receive Connection Hardware
- All Components Hot Dip Galvanized - ASTM 123 Grade 55
- Custom Configurations Available Upon Request

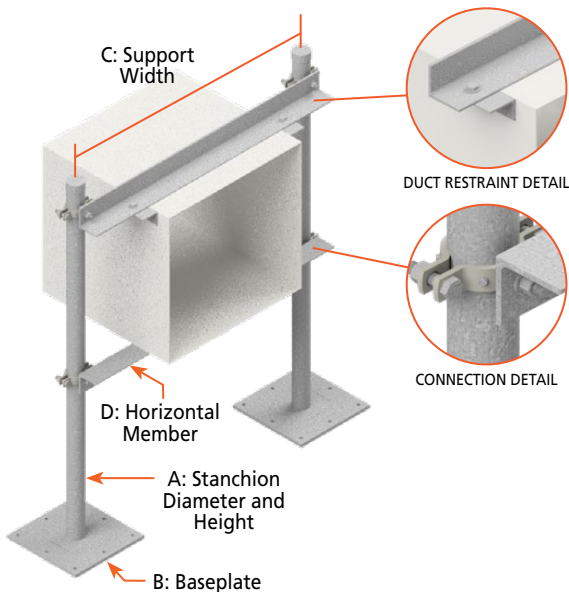
A: STANCHION DIAMETERS & HEIGHT				B: BASE PLATE		D: HORIZONTAL MEMBER		E: # OF TIERS	
*01	2" DIA. 24" TALL	*07	3" DIA. 96" TALL	*01	NO BASE PLATE	*01	L 2.5" X 2.5" X 3/16"	*01	ONE
*02	2" DIA. 48" TALL	*08	4" DIA. 24" TALL	*02	7" X 7" X 1/2"	*02	L 2.5" X 2.5" X 1/4"	*02	TWO
*03	2" DIA. 72" TALL	*09	4" DIA. 48" TALL	*03	12" X 12" X 1/2"	*03	L 3" X 3" X 1/4"	*03	THREE
*04	3" DIA. 24" TALL	*10	4" DIA. 72" TALL	*04	16" X 16" X 1/2"	*04	L 3.5" X 3.5" X 1/4"	*04	FOUR
*05	3" DIA. 48" TALL	*11	4" DIA. 96" TALL			*05	L 4" X 4" X 1/4"		
*06	3" DIA. 72" TALL	*12	4" DIA. 120" TALL						

## PFLD Assembly

Post Frame - L-Member and Duct Restraint

Suitable For: Rectangular Duct Requiring Upper Duct Restraint

Assembly Contains: Stanchions, USC's, Upper and Lower Horizontal "L" Members, Duct Restraint Brackets, Connection Hardware



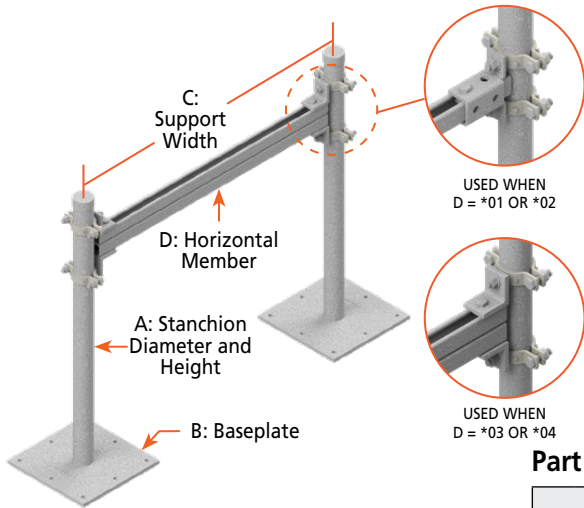
- Support Shipped Partially Assembled (Field Assembly Is Required)
- Horizontal Member Cut To Length and Pre-drilled To Receive Connection Hardware
- Holes In Horizontal Member To Attach Duct Restraint Bracket To Be Drilled In The Field
- All Components Hot Dip Galvanized - ASTM 123 Grade 55
- Custom Configurations Available Upon Request

Part #: PFLD - A, B, C, D, E

A STANCHION DIAMETERS & HEIGHT				B BASE PLATE		D HORIZONTAL MEMBER		E # OF TIERS	
*01	2" DIA. 24" TALL	*07	3" DIA. 96" TALL	*01	NO BASE PLATE	*01	L 2.5" X 2.5" X 3/16"	*01	ONE
*02	2" DIA. 48" TALL	*08	4" DIA. 24" TALL	*02	7" X 7" X 1/2"	*02	L 2.5" X 2.5" X 1/4"	*02	TWO
*03	2" DIA. 72" TALL	*09	4" DIA. 48" TALL	*03	12" X 12" X 1/2"	*03	L 3" X 3" X 1/4"		
*04	3" DIA. 24" TALL	*10	4" DIA. 72" TALL	*04	16" X 16" X 1/2"	*04	L 3.5" X 3.5" X 1/4"		
*05	3" DIA. 48" TALL	*11	4" DIA. 96" TALL			*05	L 4" X 4" X 1/4"		
*06	3" DIA. 72" TALL	*12	4" DIA. 120" TALL						

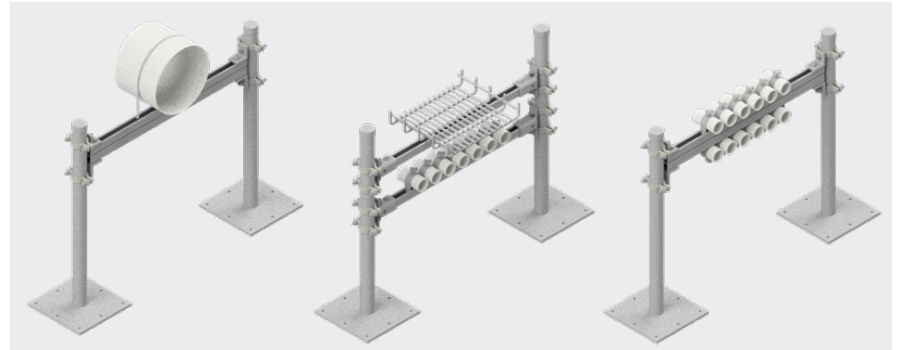
## PFS Assembly

Post Frame - Strut Member



Suitable For: HVAC Duct, Piping and Electrical Systems

Assembly Contains: Stanchions, USC's, Horizontal Strut Members, Connection Hardware



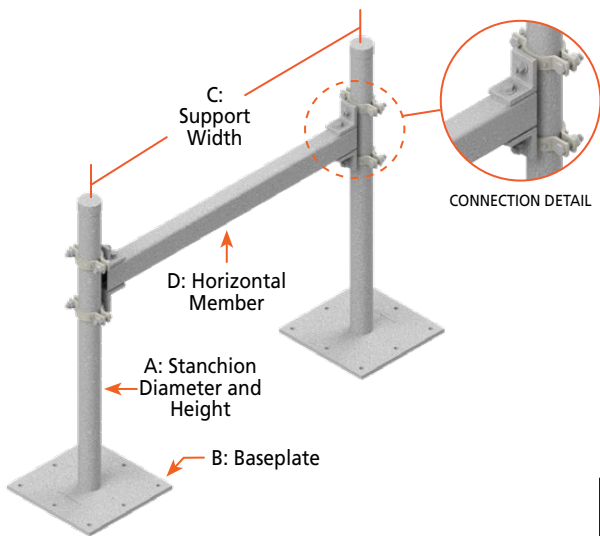
Part #: PFS - A, B, C, D, E

A STANCHION DIAMETERS & HEIGHT		B BASE PLATE		D HORIZONTAL MEMBER		E # OF TIERS			
*01	2" DIA. 24" TALL	*07	3" DIA. 96" TALL	*01	NO BASE PLATE	*01	13/16" X 1-5/8" (B2B) 14 GA. STRUT	*01	ONE
*02	2" DIA. 48" TALL	*08	4" DIA. 24" TALL	*02	7" X 7" X 1/2"	*02	1-5/8" X 1-5/8" 12 GA. STRUT	*02	TWO
*03	2" DIA. 72" TALL	*09	4" DIA. 48" TALL	*03	12" X 12" X 1/2"	*03	1-5/8" X 1-5/8" (B2B) 12 GA. STRUT	*03	THREE
*04	3" DIA. 24" TALL	*10	4" DIA. 72" TALL	*04	16" X 16" X 1/2"	*04	3-1/4" X 3-1/4" (B2B) 12 GA. STRUT	*04	FOUR
*05	3" DIA. 48" TALL	*11	4" DIA. 96" TALL						
*06	3" DIA. 72" TALL	*12	4" DIA. 120" TALL						

- Support Shipped Partially Assembled (Field Assembly Is Required)
- Horizontal Member Cut To Length and Predrilled To Receive Connection Hardware
- All Components Hot Dip Galvanized - ASTM 123 Grade 55
- Custom Configurations Available Upon Request

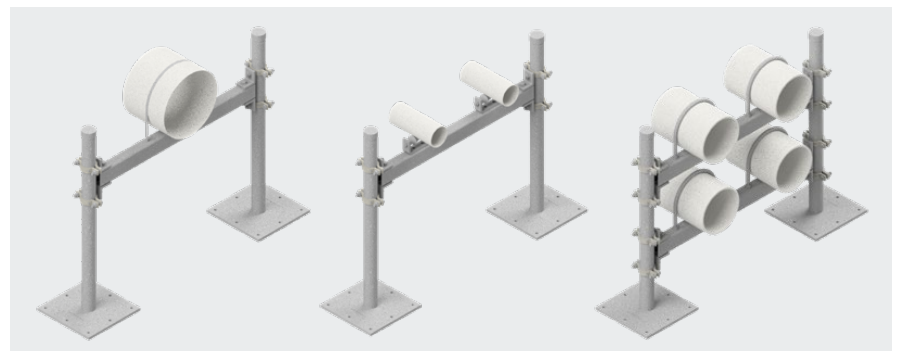
## PFH Assembly

Post Frame - Structural Tube (HSS) Member



Suitable For: HVAC Duct, Piping and Electrical System Supports Requiring Additional Capacity or Wide Spans

Assembly Contains: Stanchions, USC's, Horizontal Structural Tube Members, Connection Hardware



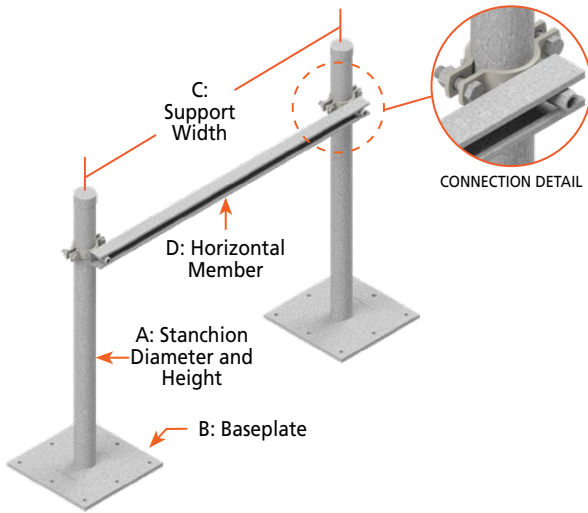
Part #: PFH - A, B, C, D, E

A STANCHION DIAMETERS & HEIGHT		B BASE PLATE		D HORIZONTAL MEMBER		E # OF TIERS			
*01	2" DIA. 24" TALL	*07	3" DIA. 96" TALL	*01	NO BASE PLATE	*01	HSS 2" X 2" X 3/16"	*01	ONE
*02	2" DIA. 48" TALL	*08	4" DIA. 24" TALL	*02	7" X 7" X 1/2"	*02	HSS 2" X 2" X 1/4"	*02	TWO
*03	2" DIA. 72" TALL	*09	4" DIA. 48" TALL	*03	12" X 12" X 1/2"	*03	HSS 3" X 3" X 3/16"	*03	THREE
*04	3" DIA. 24" TALL	*10	4" DIA. 72" TALL	*04	16" X 16" X 1/2"	*04	HSS 3" X 3" X 1/4"	*04	FOUR
*05	3" DIA. 48" TALL	*11	4" DIA. 96" TALL			*05	HSS 4" X 4" X 3/16"		
*06	3" DIA. 72" TALL	*12	4" DIA. 120" TALL						

- Support Shipped Partially Assembled (Field Assembly Is Required)
- Horizontal Member Cut To Length and Predrilled To Receive Connection Hardware
- All Components Hot Dip Galvanized - ASTM 123 Grade 55
- Custom Configurations Available Upon Request

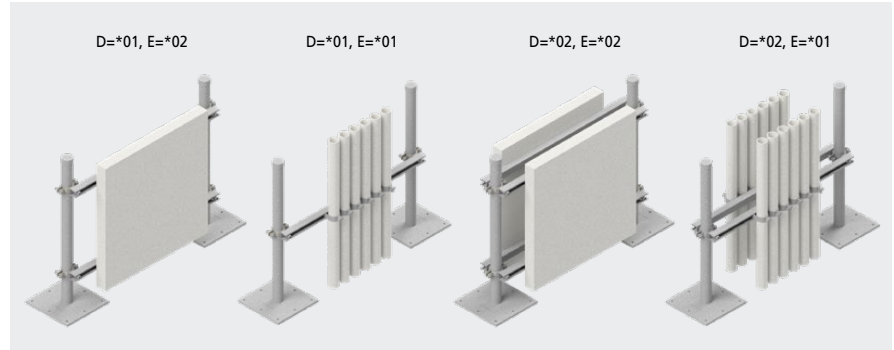
## PFSS Assembly

Post Frame - Surface Mounted Strut Member



Suitable For: Panel Boards, Vertical Utility Systems

Assembly Contains: Stanchions, USC's, Horizontal Strut Members, Connection Hardware



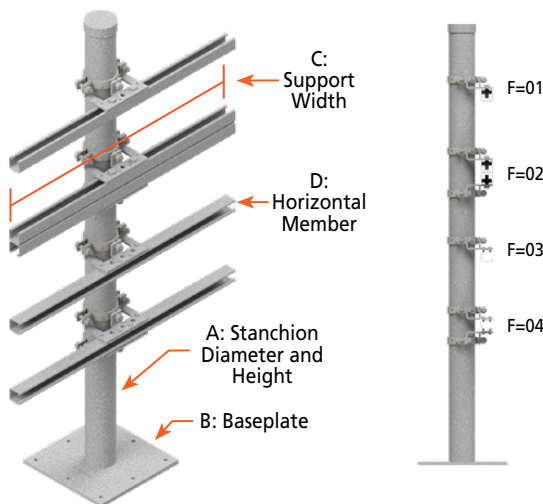
Part #: PFSS - A, B, C, D, E

A STANCHION DIAMETERS & HEIGHT		B BASE PLATE	D SINGLE OR DOUBLE	E # OF TIERS
*01	2" DIA. 24" TALL	*01	NO BASE PLATE	*01 ONE
*02	2" DIA. 48" TALL	*02	7" X 7" X 1/2"	*02 TWO
*03	2" DIA. 72" TALL	*03	12" X 12" X 1/2"	*03 THREE
*04	3" DIA. 24" TALL	*04	16" X 16" X 1/2"	*04 FOUR
*05	3" DIA. 48" TALL	*11	4" DIA. 96" TALL	
*06	3" DIA. 72" TALL	*12	4" DIA. 120" TALL	

- Support Shipped Partially Assembled (Field Assembly Is Required)
- Horizontal Member Cut To Length and Pre-drilled To Receive Connection Hardware
- All Components Hot Dip Galvanized - ASTM 123 Grade 55
- Custom Configurations Available Upon Request

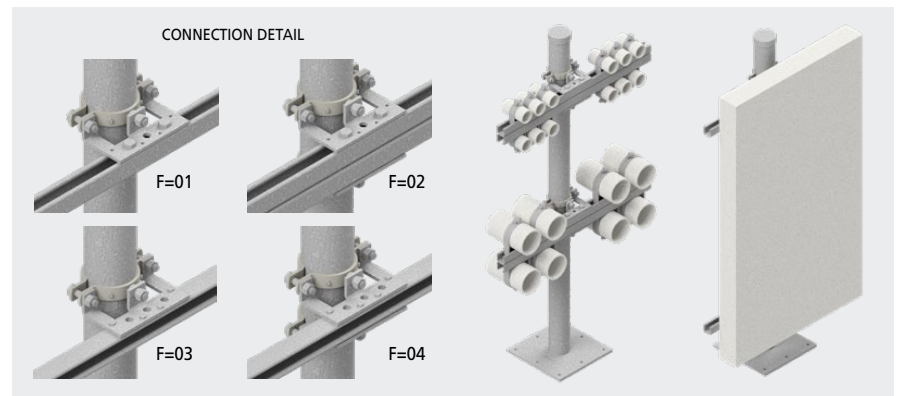
## SPSH Assembly

Single Post - Horizontal Strut Member



Suitable For: Panel Boards, Piping and Electrical Systems

Assembly Contains: Stanchions, USC's, USB's, Horizontal Strut Members, Connection Hardware



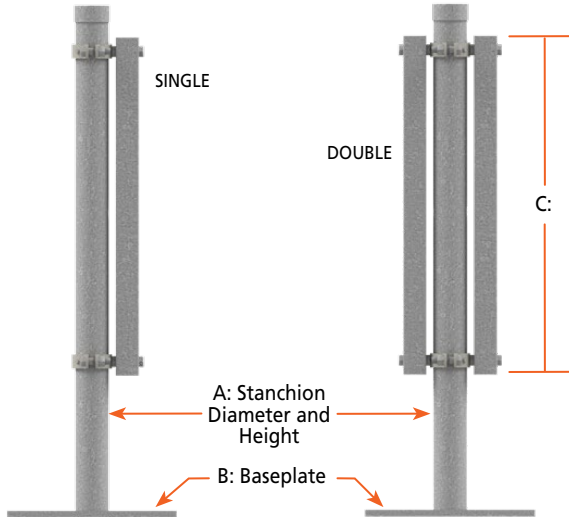
Part #: SPSH - A, B, C, D, E, F

A STANCHION DIAMETERS & HEIGHT		B BASE PLATE	D HORIZONTAL MEMBER	E # OF TIERS	F INSTALLATION OPTION						
*01	2" DIA. 24" TALL	*05	3" DIA. 48" TALL	*01	NO BASE PLATE	*01	13/16" X 1-5/8" (B2B) 14 GA. STRUT	*01	ONE	*01	SINGLE SIDED - BOLT
*02	2" DIA. 48" TALL	*06	3" DIA. 72" TALL	*02	7" X 7" X 1/2"	*02	1-5/8" X 1-5/8" 12 GA. STRUT	*02	TWO	*02	DOUBLE SIDED - BOLT
*03	2" DIA. 72" TALL	*07	3" DIA. 96" TALL	*03	12" X 12" X 1/2"	*03	1-5/8" X 1-5/8" (B2B) 12 GA. STRUT	*03	THREE	*03	SINGLE SIDED - SCREW
*04	3" DIA. 24" TALL			*04	16" X 16" X 1/2"			*04	FOUR	*04	DOUBLE SIDED - SCREW

- Support Shipped Partially Assembled (Field Assembly Is Required)
- All Components Hot Dip Galvanized - ASTM 123 Grade 55
- Custom Configurations Available Upon Request

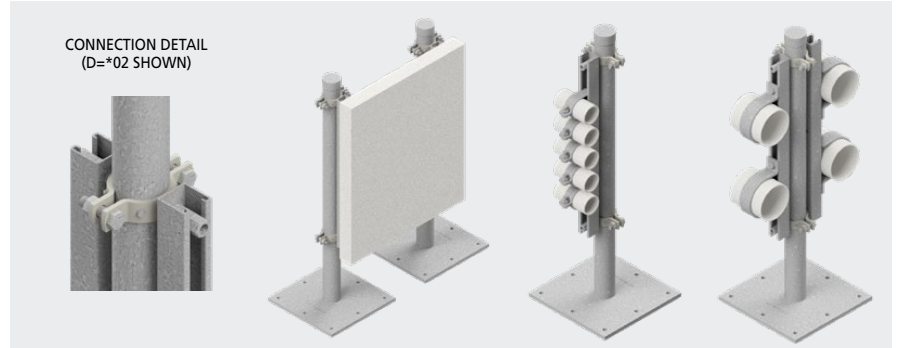
## SPSV Assembly

Single Post - Vertical Strut Member



Suitable For: Panel Boards, Piping and Electrical Systems

Assembly Contains: Stanchions, USC's, Vertical Strut Members, Connection Hardware



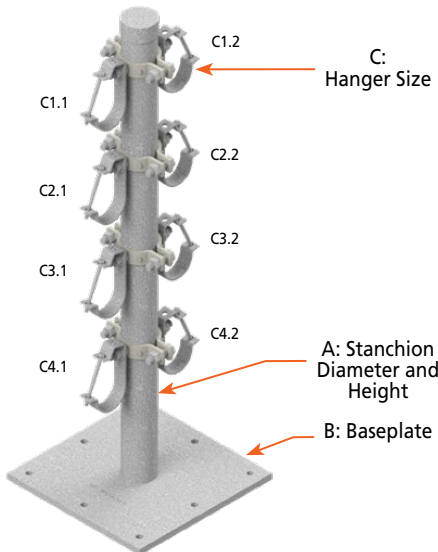
Part #: SPSV - A, B, C, D

A STANCHION DIAMETERS & HEIGHT			B BASE PLATE		D SINGLE OR DOUBLE		
*01	2" DIA. 24" TALL	*07	3" DIA. 96" TALL	*01	NO BASE PLATE	*01	SINGLE SIDED
*02	2" DIA. 48" TALL	*08	4" DIA. 24" TALL	*02	7" X 7" X 1/2"	*02	DOUBLE SIDED
*03	2" DIA. 72" TALL	*09	4" DIA. 48" TALL	*03	12" X 12" X 1/2"		
*04	3" DIA. 24" TALL	*10	4" DIA. 72" TALL	*04	16" X 16" X 1/2"		
*05	3" DIA. 48" TALL	*11	4" DIA. 96" TALL				
*06	3" DIA. 72" TALL	*12	4" DIA. 120" TALL				

- Support Shipped Partially Assembled (Field Assembly Is Required)
- Horizontal Member Cut To Length and Pre-drilled To Receive Connection Hardware
- All Components Hot Dip Galvanized - ASTM 123 Grade 55
- Custom Configurations Available Upon Request

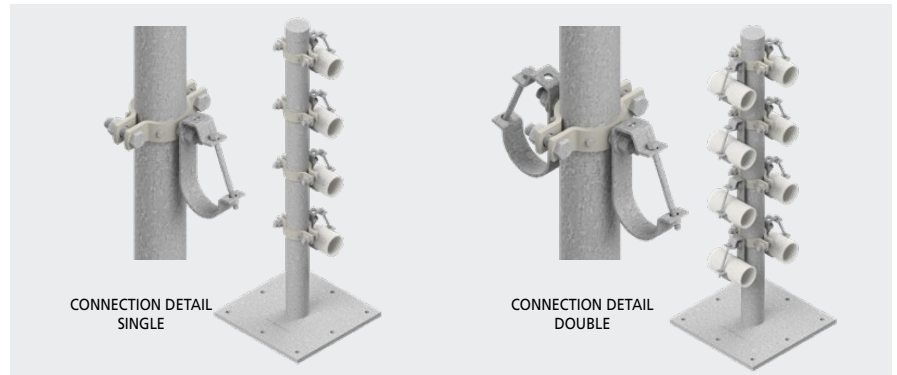
## SPJ Assembly

Single Post - J-Hangers



Suitable For: Piping and Electrical Conduit

Assembly Contains: Stanchions, USC's, J-Hangers, Connection Hardware



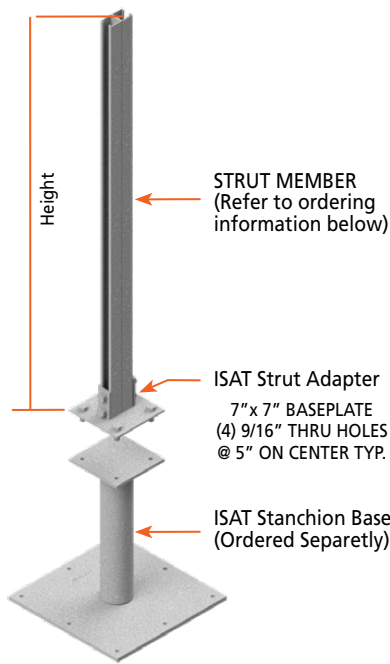
Part #: SPJ - A, B, C1.1, C1.2, C2.1, C2.2, C3.1, C3.2, C4.1, C4.2

A STANCHION DIAMETERS & HEIGHT			B BASE PLATE		C HANGER SIZE				
*01	2" DIA. 24" TALL	*07	3" DIA. 96" TALL	*01	NO BASE PLATE	*00	NONE	*06	3"
*02	2" DIA. 48" TALL	*08	4" DIA. 24" TALL	*02	7" X 7" X 1/2"	*01	1"	*07	3-1/2"
*03	2" DIA. 72" TALL	*09	4" DIA. 48" TALL	*03	12" X 12" X 1/2"	*02	1-1/4"	*08	4"
*04	3" DIA. 24" TALL	*10	4" DIA. 72" TALL	*04	16" X 16" X 1/2"	*03	1-1/2"	*09	5"
*05	3" DIA. 48" TALL	*11	4" DIA. 96" TALL			*04	2"	*10	6"
*06	3" DIA. 72" TALL	*12	4" DIA. 120" TALL			*05	2-1/2"	*11	8"

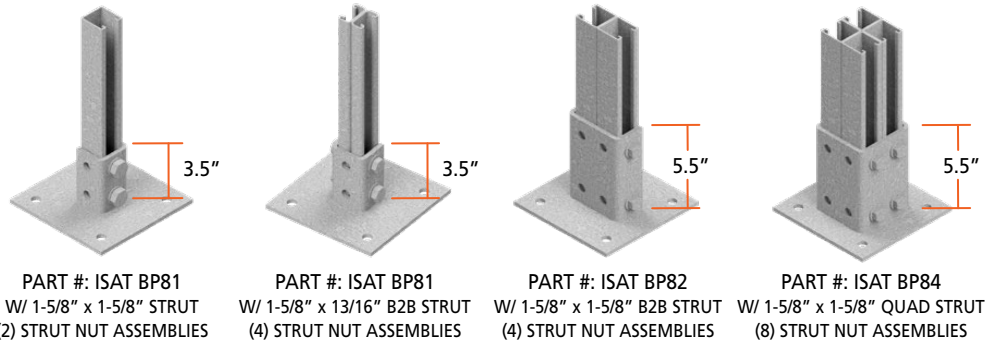
- Support Shipped Partially Assembled (Field Assembly Is Required)
- All Components Hot Dip Galvanized - ASTM 123 Grade 55
- Custom Configurations Available Upon Request

# ISAT Strut Adapter

Pre-Engineered and Available In Stock



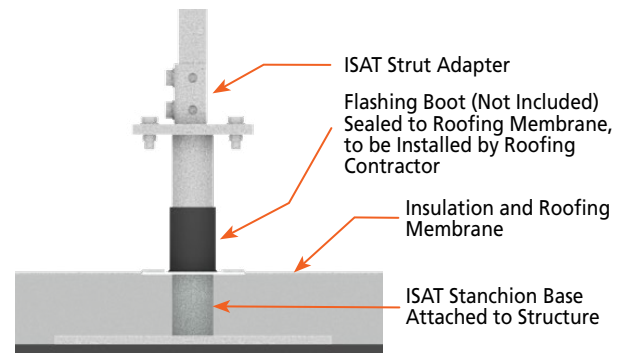
Refer to ISAT Detail R1.7 and R1.8 for technical data.



## ISAT'S STRUT ADAPTER OFFERS THE BEST OF BOTH WORLDS:

ISAT's Cylindrical Stanchion Base Allows for Easy and Effective Waterproofing for Rooftop Applications.

The ISAT Strut Adapter Enables the Transition from Pipe to Strut Members for Support Construction.

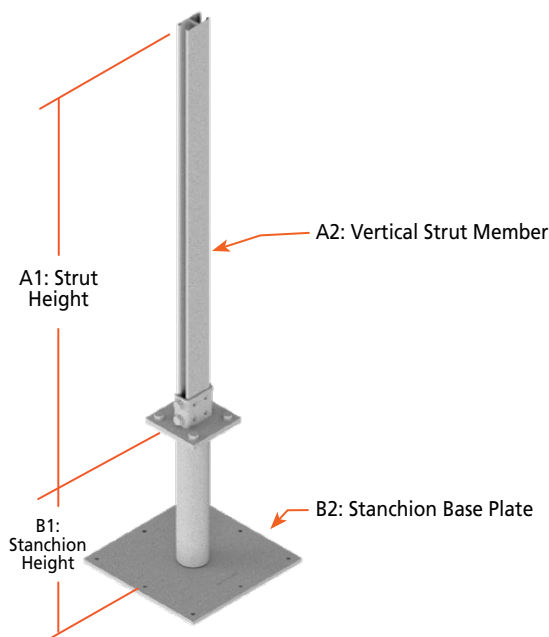


# SPS Assembly

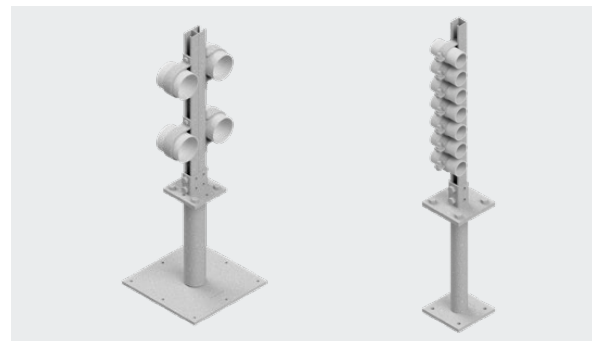
Single Post - Strut

Suitable For: Pipe and Electrical Systems, Refrigeration Lines

Assembly Contains: Stanchion Base, Strut Adapter, Strut Members, Connection Hardware



- Support Shipped Partially Assembled (Field Assembly Is Required)
- All Components Hot Dip Galvanized - ASTM 123 Grade 55
- Custom Configurations Available Upon Request



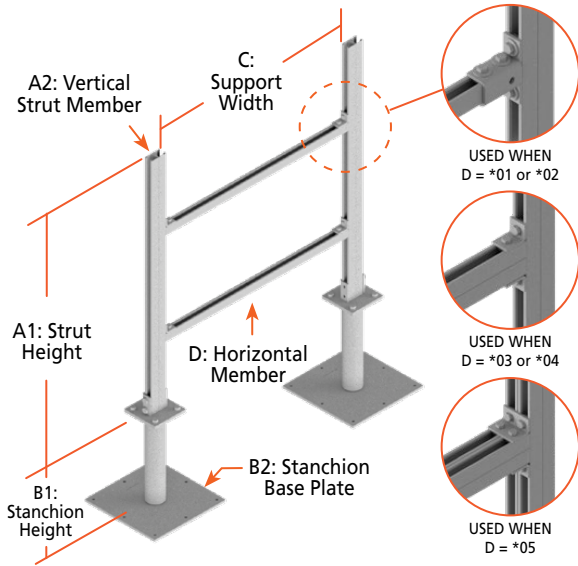
PART #: SPS -A1-A2-B1-B2

	A2 VERTICAL STRUT	B1 STANCHION BASE-HEIGHT	B2 STANCHION BASE PLATE
*01	1-5/8" x 1-5/8" 12 GA.	*00 NONE	*00 NO BASE PLATE
*02	1-5/8" x 13/16" (B2B) 14 GA.	*01 12"	*01 7" X 7" X 1/2"
*03	1-5/8" x 1-5/8" (B2B) 12 GA.	*02 18"	*02 12" X 12" X 1/2"
*04	1-5/8" x 1-5/8" (QUAD) 12 GA.	*03 24"	*03 16" X 16" X 1/2"

2" Dia. Stanchion provided when A=\*01 or \*02, 3" Dia. Stanchion provided when A=\*03, 4" Dia. Stanchion provided when A=\*4.

## PSFS Assembly

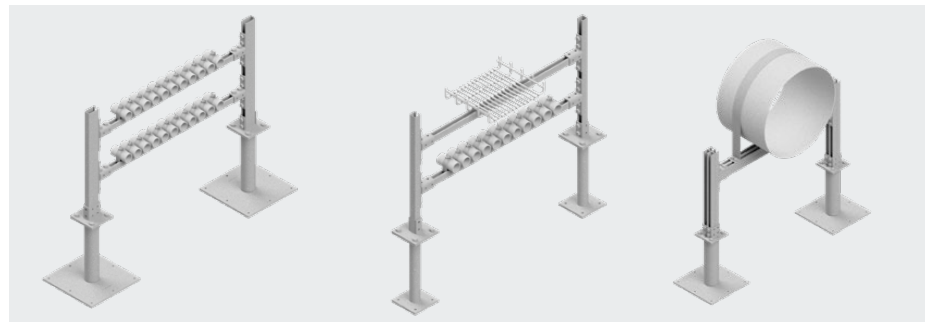
Post Strut Frame - Strut Member



- Support Shipped Partially Assembled (Field Assembly Is Required)
- Horizontal And Vertical Members Cut To Length
- All Components Hot Dip Galvanized - ASTM 123 Grade 55
- Custom Configurations Available Upon Request

Suitable For: HVAC Duct, Piping and Electrical Systems

Assembly Contains: Stanchion Bases, Strut Adapters, Vertical and Horizontal Strut Members, Connection Hardware



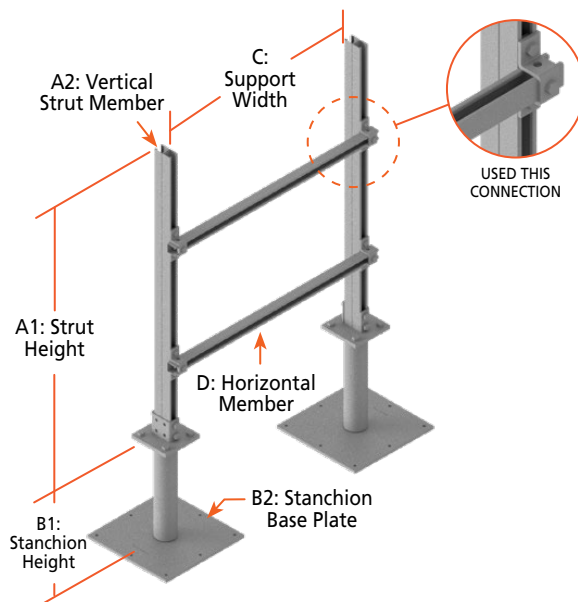
Part #: PSFS-A1-A2-B1-B2-C-D-E

A2 VERTICAL STRUT		B1 STANCHION BASE-HEIGHT		B2 STANCHION BASE PLATE		D HORIZONTAL STRUT		E # OF TIERS	
*01	1-5/8" x 1-5/8" 12 GA.	*00	NONE	*00	NO BASE PLATE	*01	1-5/8" x 1-5/8" 12 GA.	*01	ONE
*02	1-5/8" x 13/16" (B2B) 14 GA.	*01	12"	*01	7" X 7" X 1/2"	*02	1-5/8" x 13/16" (B2B) 14 GA.	*02	TWO
*03	1-5/8" x 1-5/8" (B2B) 12 GA.	*02	18"	*02	12" X 12" X 1/2"	*03	1-5/8" x 1-5/8" (B2B) 12 GA.	*03	THREE
*04	1-5/8" x 1-5/8" (QUAD) 12 GA.	*03	24"	*03	16" X 16" X 1/2"	*04	1-5/8" x 3-1/4" (B2B) 12 GA.	*04	FOUR
						*05	1-5/8" x 1-5/8" (QUAD) 12 GA. (ONLY AVAILABLE WHEN QUAD STRUT IS SELECTED AS THE VERTICAL MEMBER)		

2" Dia. Stanchion provided when A=\*01 or \*02, 3" Dia. Stanchion provided when A=\*03, 4" Dia. Stanchion provided when A=\*4.

## PSFFS Assembly

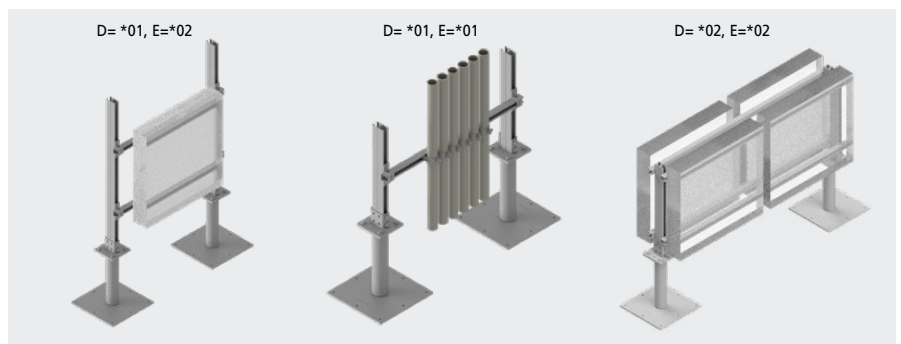
Post Strut Frame - Surface Mounted Strut Member



- Support Shipped Partially Assembled (Field Assembly Is Required)
- Horizontal And Vertical Members Cut To Length
- All Components Hot Dip Galvanized - ASTM 123 Grade 55
- Custom Configurations Available Upon Request

Suitable For: HVAC Duct, Piping and Electrical System Supports

Assembly Contains: Stanchion Bases, Strut Adapters, Vertical and Horizontal Strut Members, Connection Hardware

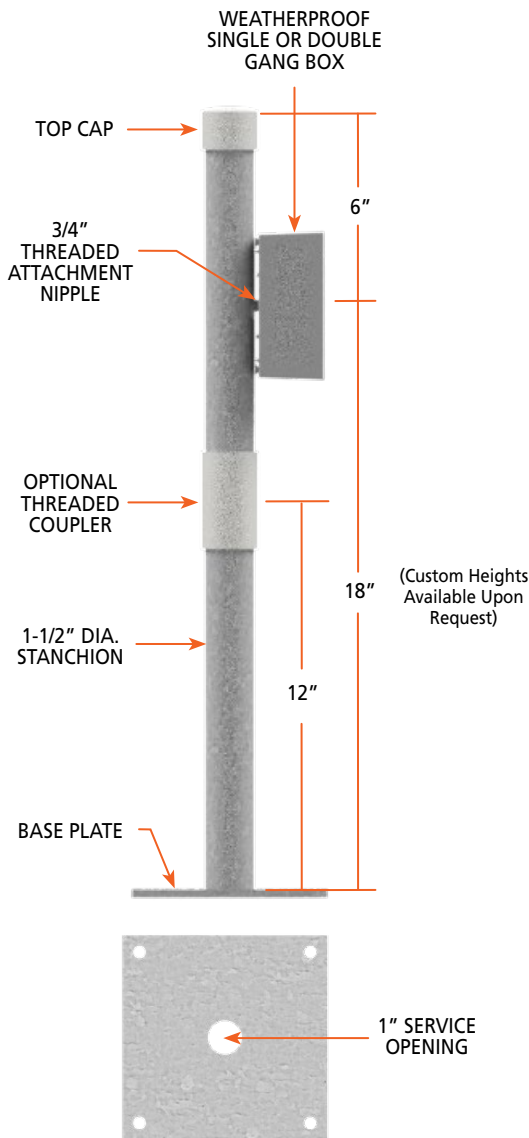


Part #: PSFFS-A1-A2-B1-B2-C-D-E

A2 VERTICAL STRUT		B1 STANCHION BASE-HEIGHT		B2 STANCHION BASE PLATE		D HORIZONTAL STRUT		E # OF TIERS	
*01	1-5/8" x 1-5/8" 12 GA.	*00	NONE	*00	NO BASE PLATE	*01	SINGLE SIDED	*01	ONE
*02	1-5/8" x 13/16" (B2B) 14 GA.	*01	12"	*01	7" X 7" X 1/2"	*02	DOUBLE SIDED	*02	TWO
*03	1-5/8" x 1-5/8" (B2B) 12 GA.	*02	18"	*02	12" X 12" X 1/2"			*03	THREE
*04	1-5/8" x 1-5/8" (QUAD) 12 GA.	*03	24"	*03	16" X 16" X 1/2"			*04	FOUR

2" Dia. Stanchion provided when A=\*01 or \*02, 3" Dia. Stanchion provided when A=\*03, 4" Dia. Stanchion provided when A=\*4.

# ISAT's Service Stand



6" x 6" x 1/4" BASE PLATE WITH 1" SERVICE OPENING  
(4) 7/16" ANCHOR HOLES @ 4" OC  
(FOR 3/8" DIA. CONCRETE ANCHORS)

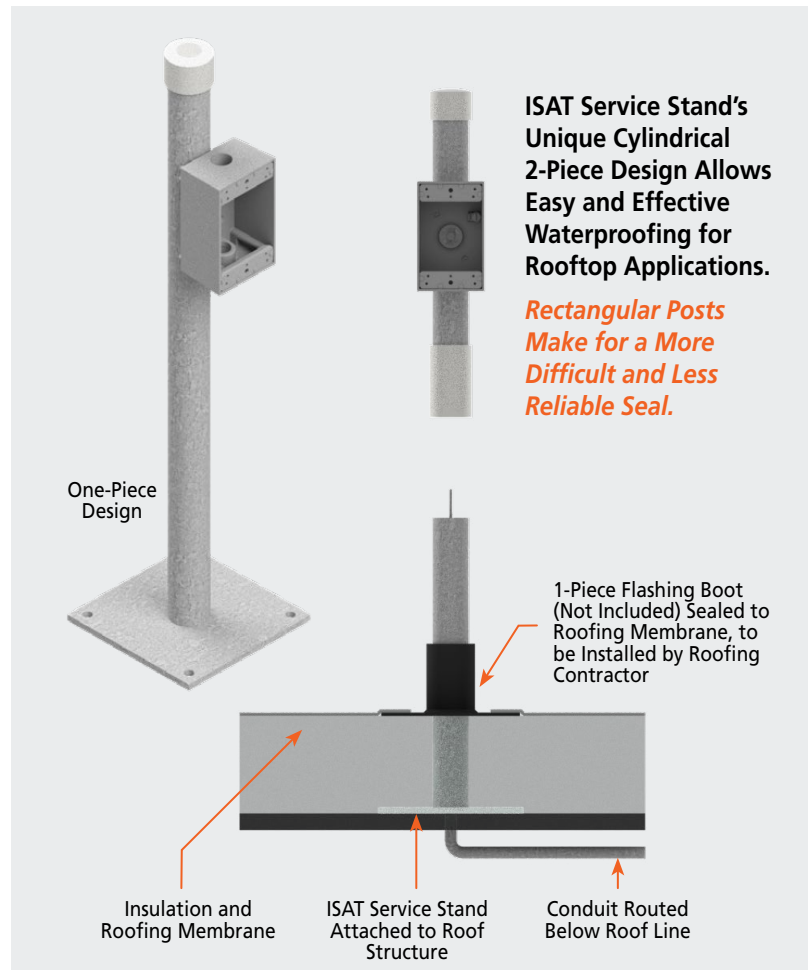
**Part #:**

PART#	DESCRIPTION	ONE OR TWO PIECE DESIGN
ISAT SS18GB1	SINGLE GANG BOX	ONE PIECE
ISAT SS18GB2	DOUBLE GANG BOX	ONE PIECE
ISAT SS18GB1-2	SINGLE GANG BOX	TWO PIECE
ISAT SS18GB2-2	DOUBLE GANG BOX	TWO PIECE

Support Members are Hot Dip Galvanized Finish  
Custom Powder Coated or Painted Finishes Available

ISAT's Service Stand provides an easy to install, single post support for electrical devices requiring a single or double gang box.

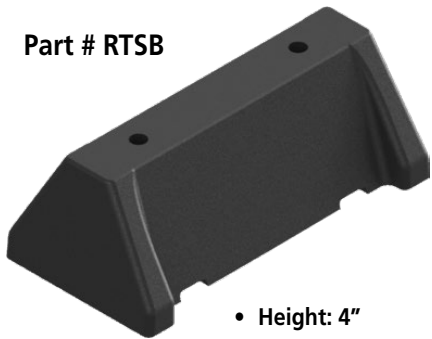
- Ideal for Receptacle Outlets Within 25 ft. of Equipment Per NEC 210.63
- NEMA 3R Rated Box Offers Protection from Falling Dirt, Rain, Sleet, and/or Snow (Must be Used With NEMA 3R Receptacle and Cover)
- Optional 2-Piece Design With Threaded Coupler Ideal For Rooftop Applications Requiring Waterproof Flashing
- Indoor or Outdoor Use:
  - Rooftops
  - Heating, Air-Conditioning, and Refrigeration Equipment
  - Indoor Service Equipment
  - Mechanical Rooms
  - Gardens, Atriums, Courtyards, Public Spaces
- New Construction or Retrofit Applications



### Nonstructural Rooftop Support Bases

For installation on most types of roofing material or other flat surfaces, when positive attachment to the structure is not required.

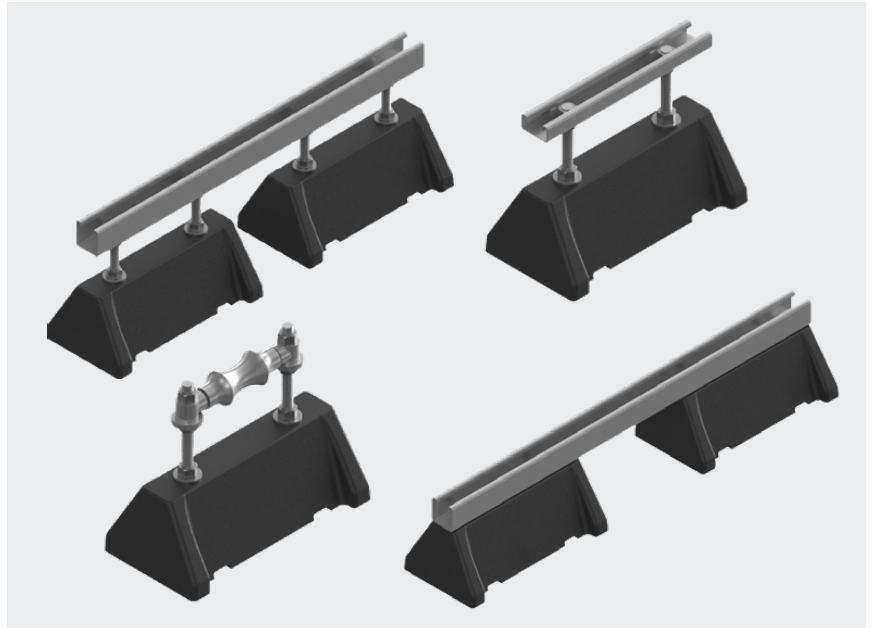
#### Part # RTSB



- Height: 4"
- Base Width: 5-1/2"
- Base Length: 10-3/4"
- Hole Size: 1/2"
- Max. Uniform Load: 1,700 lbs

100% Post-consumer, American recycled rubber and recycled plastic.

Base area = 23.1 sq. inches for use in bearing calculations.



#### Part # SMSB

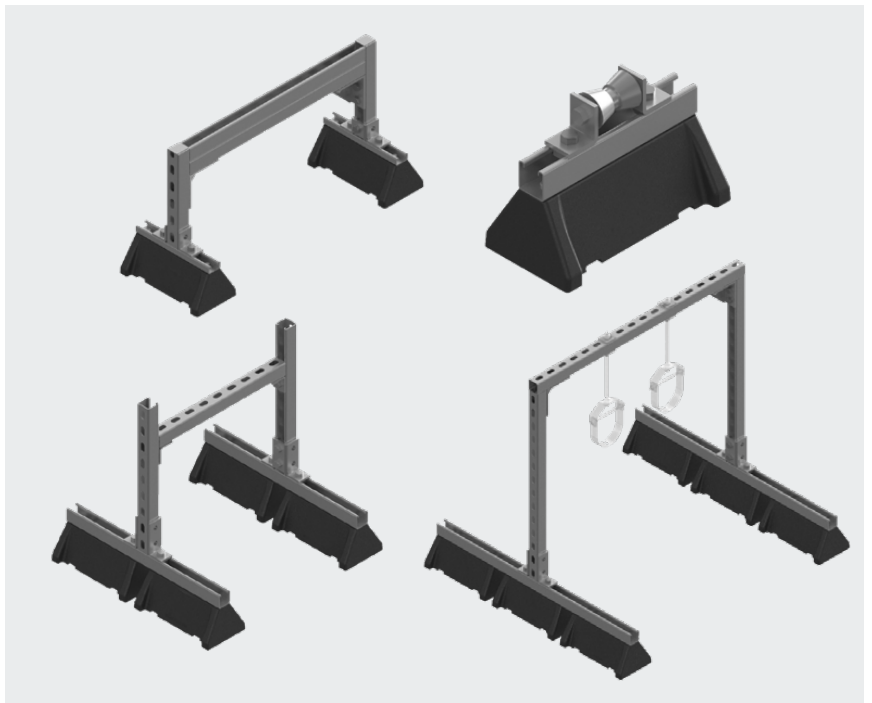


- Base Width: 5-1/2"
- Base Length: 10-3/4"
- Max. Uniform Load: 1,700 lbs

Part #	Channel Size	Total Height
SMSB13	13/16" x 1-5/8"	4-13/16"
SMSB11	1-5/8" x 1-5/8"	5-5/8"

100% Post-consumer, American recycled rubber and recycled plastic.

Base area = 23.1 sq. inches for use in bearing calculations.



## Application Examples



# **Rapid Roof**

## **Support System**

### **Engineered Rooftop Support Solutions**

#### **Arizona**

3545 S 28th Street Building A  
Phoenix, AZ 85040  
PH: 602-470-0505

#### **California (Fremont)**

412 Kato Terrace  
Fremont, CA 94539  
PH: 510-657-1111

#### **California (Sacramento)**

8169 Alpine Ave, Ste D  
Sacramento, CA 95826  
PH: 916-732-2424

#### **California (San Diego)**

6490 Marindustry Dr, Ste C  
San Diego, CA 92121  
PH: 858-547-0700

#### **Nevada**

6355 W Maule Ave, Ste 100  
Las Vegas, NV 89118  
PH: 702-364-2606

#### **New York**

18-28 42nd Street  
Astoria, NY 11105  
PH: 212-259-0440

#### **North Carolina**

1020 Crews Rd, Ste Q & P  
Matthews, NC 28105  
PH: 704-841-4080

#### **Ohio**

100 W Old Wilson Bridge Rd, Ste 201  
Columbus, OH 43085  
PH: 440-444-3550

#### **Oregon**

14325 NE Airport Way, Ste 101  
Portland, OR 97230  
PH: 503-252-4423

#### **Texas**

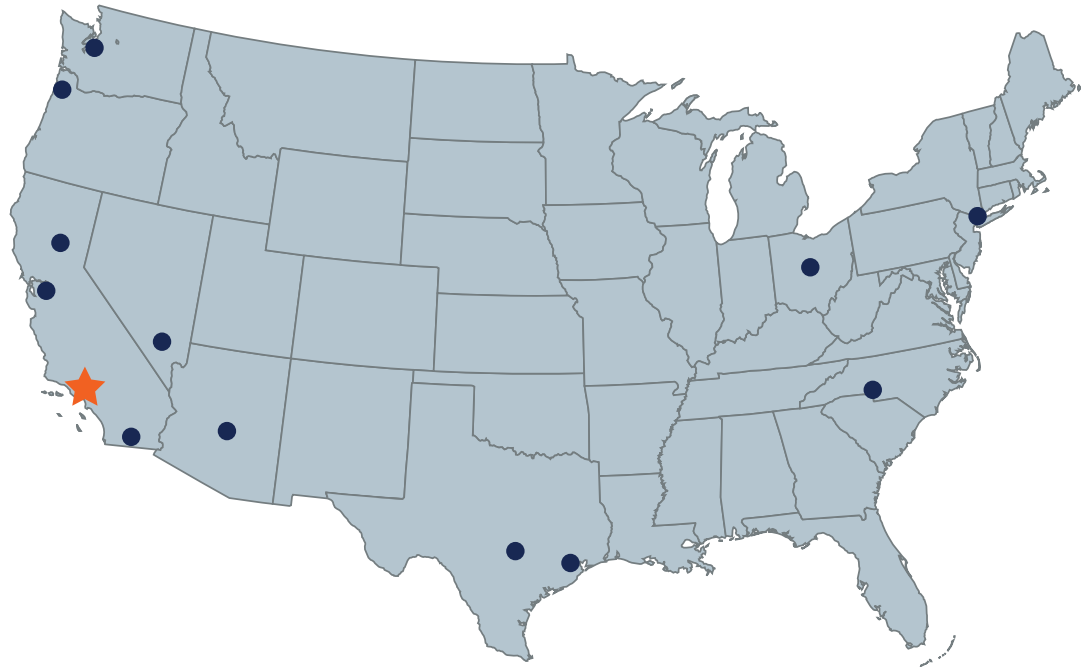
2500 S. Hwy 183, Bldg 4, Ste 400  
Austin, TX 78744  
PH: 512-910-4500

#### **Texas**

1718 N Fry Rd, Suite #118  
Houston, TX 77041  
PH: 281-456-3421

#### **Washington**

3107 142nd Ave East, Ste 102  
Sumner, WA 98390  
PH: 253-926-2250



### **CORPORATE HEADQUARTERS**

Inside US: 877-999-ISAT (4728)

Outside US: 00-1-714-880-3024

SERVICES@ISATTS.COM | ISATTS.COM

16050 Canary Ave., La Mirada, CA 90638



*Innovation • Engineering • BIM • Fabrication*

**Serving the Construction Industry Since 1977**

©2023 ISAT Total Support - All Rights Reserved

V 1.4