

# ISAT

## TOTAL SUPPORT

Innovation • Engineering • BIM • Fabrication

# DECK ANCHOR INSERTS

- Concrete Steel Decks
- Wood-Formed Concrete Decks
- No Concrete Steel Decks



The Original!  
**BLUE BANGER  
HANGER**  
Patented



*The Inserts that Revolutionized the Anchor Industry*

## Multi-Threaded Deck Inserts

The Anchor Insert of Choice for Professionals Worldwide

877-999-ISAT (4728) | ISATTS.COM

©2025 ISAT - A Division of Tomarco - All Rights Reserved



## The Original, Patented Blue Banger Hangers

### The Original Patented Inserts that Changed the Anchoring Industry

Blue Banger Hangers have been engineered to save you time, money and are backed by industry leading test approvals and application engineering. Each insert handles multiple threaded rod diameters and installs in a fraction of the time of post installed anchors. Blue Banger Hangers are the insert of choice across the full spectrum of the construction industry including mechanical, electrical, plumbing, piping and fire sprinkler contractors.

### Backed By Industry Leading Test Approvals

- Cracked concrete tested for vertical and dynamic seismic loading
- Backed by: ICC report ESR-3599 granted under AC446

### Engineered To Save You Time And Money

- Multiple internal threads support different threaded rod sizes
- Reduces inventory
- Allows for threaded rod size changes after inserts are installed
- Internal threads eliminate the need and cost of couplings

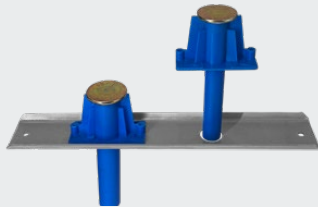


US Pat #'s  
6,240,697 B1  
7,093,400 B1

## Blue Banger Hanger Product Index



**SDI-2**  
**Steel Deck Insert**  
For use with steel concrete decks



**FSB-X**  
**Flute Span Bracket**  
Use when installing SDI-2 between steel flutes



**PIP**  
**Poured-in-Place Insert**  
For use with wood-formed concrete decks



**RDI**  
**Roof Deck Insert**  
For use with no concrete steel decks



**PIP38**  
**Poured-in-Place Insert**  
For use with wood-formed concrete decks



**Learn More**

Scan the QR Code or Visit [BlueBangerHanger.com](http://BlueBangerHanger.com)

- Reduces Inventory
- Installs Fast & Secure
- Easily Change Rod Sizes
- No Drilling Concrete
- No Using Rod Couplers
- No Special Inspection
- No Installer Error





## SDI-2 - Steel Deck Insert

### For Pre-Poured Concrete Steel Decks

The new SDI-2 is ICC qualified for W3 and B Decks with concrete topping down to 1-1/2" when installed in lower flute and 2-1/2" when installed in the upper flute. SDIs are installed prior to pouring, reducing installation and material costs while increasing strength values (ideal for gravity and seismic anchorage).

#### Multiple Internal Threads

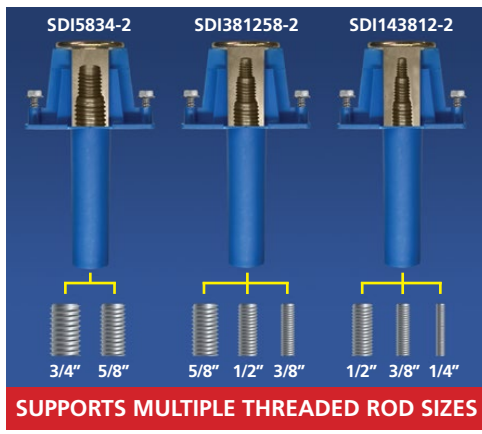
- Allows for threaded rod size changes
- Eliminate the need for, and cost of, couplings

#### Machined Steel Insert with Large Flanged Head

- Provides excellent pullout capacity for overhead attachments
- Qualified for use in W-deck and B-deck
- Improved shallow topping slab requirements (1-1/2" when installed in lower flute, 2-1/2" when installed in upper flute)

#### Three Inch Plastic Sleeve

- Keeps internal threads clean
- Extended length makes insert easy to locate, even with fireproofing below the deck
- Plastic sleeve provides guidance to align threaded rod with internal threads



**SUPPORTS MULTIPLE THREADED ROD SIZES**

Part #	Rod Sizes	Description	Hole Dia.	Box Qty.
SDI143812-2	1/4", 3/8", 1/2"	Steel Deck Insert	13/16" - 7/8"	50
SDI381258-2	3/8", 1/2", 5/8"	Steel Deck Insert	1-1/8" - 1-13/16"	50
SDI5834-2	5/8", 3/4"	Steel Deck Insert	1-13/16" - 1-1/4"	50

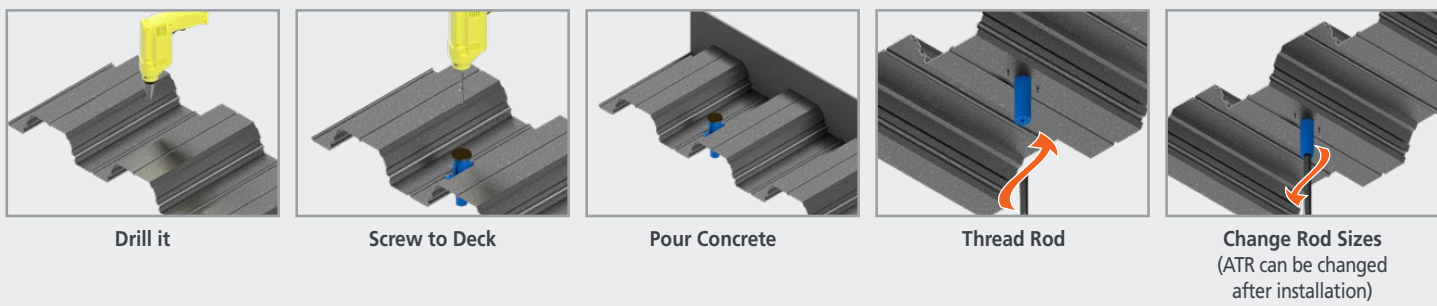
Add "BAA" to the end of the part number for the Buy American Act compliant insert



Improved load values when installed in center of deck flute



### Easy Installation (See Installation Tools - Page 7)



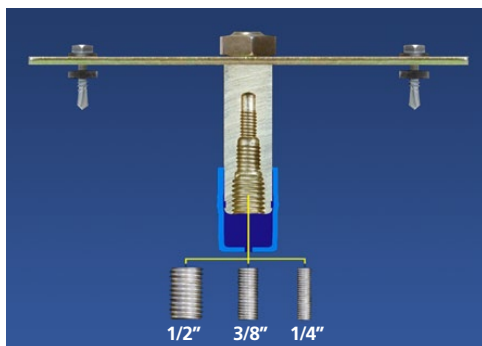
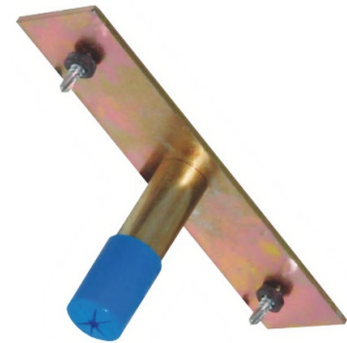


## RDI - Roof Deck Insert

### For No-Concrete Steel Decks

Roof Deck Insert anchors have a low profile attachment plate that does not protrude into roofing membrane. Fully assembled for field installation including pre-staked deck screws.

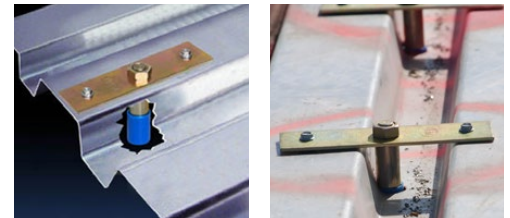
- Low profile attachment plate does not protrude into roofing membrane
- Fully assembled for quick field installation including pre-staked deck screws
- Vertical support loads of 300 lbs in 20 gauge deck
- Designed for installation on top or bottom of deck flute



Supports Multiple Threaded Rod Sizes

### Easy Installation

- Drill or punch access hole
- Insert RDI roof deck insert
- Thread pre-staked screws into deck



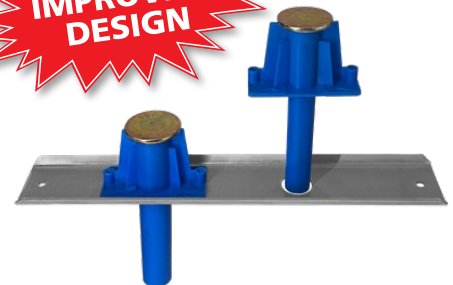
Part #	Rod Sizes	Description	Hole Dia.	Box Qty.
RDI143812	1/4", 3/8", 1/2"	Roof Deck Insert	13/16" - 7/8"	50
Add "BAA" to the end of the part number for the Buy American Act compliant insert				

## FSB-X - Flute Span Bracket

### NEW One FSB-X Now Fit All Size SDI-2 Blue Banger Hangers

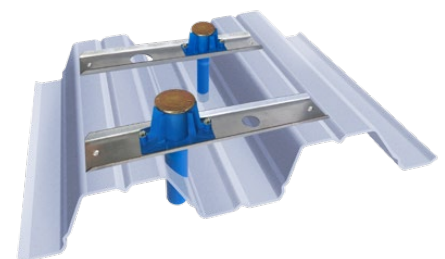
Allows the SDI-2 to be installed on the inside of the flutes!

- Enables the insert to realize the higher capacity that is achieved in the upper flute
- Positions all inserts on the project at the same elevation to eliminate multiple threaded rod lengths
- Improves the accuracy of off site prefabrication
- Fits all size Blue Banger Hanger brand SDI-2 inserts



Fits All Size SDI-2's

Part #	Description	Box Qty.
FSBX	Flute Span Bracket	25





## PIP - Poured-In-Place

### For Wood Formed Concrete Decks

Pour-in-Place inserts are used on wood form poured decks and installed prior to pouring concrete, reducing installation and material costs.

#### Multiple Internal Threads

- Allows for threaded rod size changes
- Eliminate the need for, and cost of, couplings

#### Large Plastic Base with Slurry Seal

- Angled ridges protect the head of the insert from rebar during deck work
- Larger plastic base ensures that the insert is installed flush to the deck to prevent concrete from contaminating the inner threads during the pour
- Slurry seal safeguards the internal threads during the concrete pour
- Red, white and blue colored slurry seal labels identify the insert when used by multiple trades

#### Machined Steel Insert with Large Flanged Head and Nails

- Provides excellent shear values for overhead attachments
- Insert installed height of two inches complies with typical design specifications
- Nails easily break off



Before Hammer Blow

After Hammer Blow



Supports Multiple Threaded Rod Sizes

Part #	Rod Sizes	Description	Box Qty.
PIP143812RED	1/4", 3/8", 1/2"	Poured-In-Place Insert	100
PIP143812WHITE	1/4", 3/8", 1/2"	Poured-In-Place Insert	100
PIP143812BLUE	1/4", 3/8", 1/2"	Poured-In-Place Insert	100
PIP381258RED	3/8", 1/2", 5/8"	Poured-In-Place Insert	100
PIP381258WHITE	3/8", 1/2", 5/8"	Poured-In-Place Insert	100
PIP381258BLUE	3/8", 1/2", 5/8"	Poured-In-Place Insert	100
PIP5834RED	5/8", 3/4"	Poured-In-Place Insert	100
PIP5834WHITE	5/8", 3/4"	Poured-In-Place Insert	100
PIP5834BLUE	5/8", 3/4"	Poured-In-Place Insert	100

Add "BAA" to the end of the part number for the Buy American Act compliant insert



Easily Identify Multiple Trades



55% Larger 2-3/8" Base  
Compared to Typical Competitor  
Small 1-5/16" - 1-1/2" Base



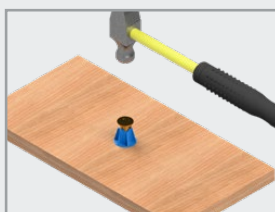
Angled Edges Help  
Prevent Damage  
Caused by Rebar



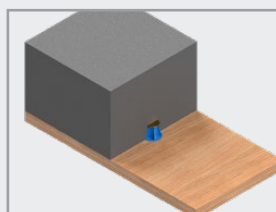
Slurry Seal  
Prevents Concrete  
Contamination



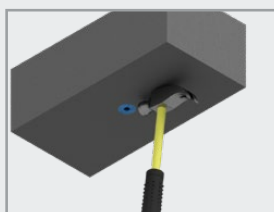
### Easy Installation (See Installation Tools - Page 7)



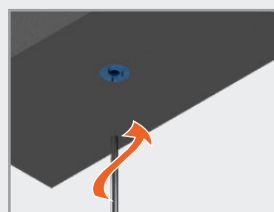
Hammer to Wood Form



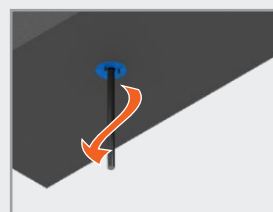
Pour Concrete



Remove Wood Form  
and Break Off Nails



Thread Rod



Change Rod Sizes  
(ATR can be changed after  
installation)

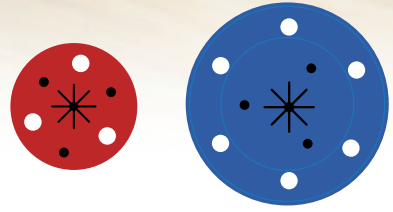
# Baby BLUE BANGER HANGER

**PIPM38 - Poured-In-Place**  
For Wood Formed Concrete Decks

**WIDE BASE**

- Virtually Eliminates Failures
- Supports 3/8" Threaded Rod
- Approved for Seismic Applications

It's All About That Base



HILTI®  
1-1/4" Base

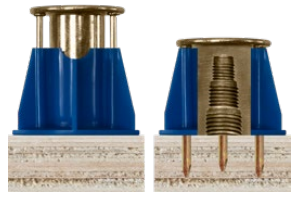
Baby Blue  
2" Base

**38%**  
SMALLER

- Fits Under Rebar
- Low Profile Prevents Snags
- Wider Base

Part #	Rod Size	Description	Box Qty.
PIPM38	3/8"	Poured-In-Place Insert	200
Add "BAA" to the end of the part number for the Buy American Act compliant insert			

**RECESSED NAILS**



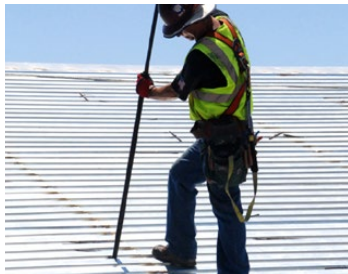
- Recessed Nails for Safety
- Nails Easily Break Off After Form Removal



## Installation Tools and Accessories

- Everything you need to make installation easy
- Increases productivity
- Better leverage reduces back and shoulder pain

Key	Part #	Description
A	CEA-POLMKEY36	3'-6" Telescoping Pole with Keyless Chuck
B <sup>1</sup>	CEA-SDDHS1	24" Deck Driller with 13/16" Hole Saw
C <sup>2</sup>	CEA-SDDHS2	24" Deck Driller with 1-3/16" Hole Saw
D <sup>1</sup>	CEA-SDDCTHS1	24" Deck Driller with 13/16" Carbide Tipped Hole Saw
E <sup>2</sup>	CEA-SDDCTHS2	24" Deck Driller with 1-3/16" Carbide Tipped Hole Saw
F <sup>3</sup>	CEA-SDDSB4	24" Deck Driller with 3/16" - 7/8" Step Drill Bit
G <sup>2</sup>	CEA-SDDSB5	24" Deck driller with 1/4" - 1-3/8" Step Drill Bit
H <sup>1</sup>	CEA-BBDPUNI8125	Universal Deck Punch with 13/16" Tip
I <sup>2</sup>	CEA-BBDPUNI1.187	Universal Deck Punch with 1-3/16" Tip
J	CEA-BBDPUNIMS114	Universal Deck Punch with 1-1/4" Metal Strap Tip
K <sup>3</sup>	CEA-PIPINSTALL2	PIP Installation Pole for ALL SIZE PIPs
Replacement Parts		
L <sup>1</sup>	MKM-MHS13	13/16" Hole Saw
M <sup>2</sup>	MKM-MHS19	1-3/16" Hole Saw
N <sup>1</sup>	MKM-CTS13	13/16" Carbide Tipped Hole Saw
O <sup>2</sup>	MKM-CTS19	1-3/16" Carbide Tipped Hole Saw
P <sup>1</sup>	CEA-SB4	3/16" - 7/8" Step Drill Bit
Q <sup>2</sup>	CEA-SB5	1/4" - 1-3/8" Step Drill Bit
R <sup>1</sup>	CEA-DPTQR8125	13/16" Universal Deck Punch Tip
S <sup>2</sup>	CEA-DPTQR1187	1-3/16" Universal Deck Punch Tip
T	CEA-DPTQRMS114	1-1/4" Metal Strap Universal Deck Punch Tip
1 - For use with SDI143812, SDI143812-2, and RDI-143812		
2 - For use with SDI381258, SDI381258-2, SDI5834, SDI5834-2, PRSDI3812, and PRSDI3812-2		
3 - For use with Baby Blue, PIP143812, PIP38125, PIP5834 & PRPIP3812		

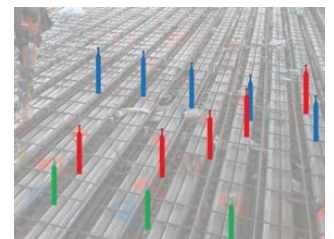


## ID Tabs

- Saves time - quick installation
- Eliminates confusion between multiple trades
- Uses a marker or adhere labels
- Provides easy identification from the ground



Part #	Description
HEA-PT 38125A	Fluorescent Yellow
HEA-PT 38125B	Fluorescent Pink
HEA-PT 38125C	Fluorescent Blue
HEA-PT 38125D	Fluorescent Purple
HEA-PT 38125E	Fluorescent Red
HEA-PT 38125F	Fluorescent Orange
HEA-PT 38125G	White
HEA-PT 38125H	Green (Pms 354)
HEA-PT 38125I	Brown (Pms 469)
HEA-PT 38125J	Grey (Cool Grey)
HEA-PT 38125K	Grey (Cool Grey)
HEA-PT 38125L	Fluorescent Green





**Arizona**

3545 S 28th Street Building A  
Phoenix, AZ 85040  
PH: 602-470-0505

**California (Fremont)**

412 Kato Terrace  
Fremont, CA 94539  
PH: 510-657-1111

**California (Sacramento)**

8169 Alpine Ave, Ste D  
Sacramento, CA 95826  
PH: 916-732-2424

**California (San Diego)**

6490 Marindustry Dr, Ste C  
San Diego, CA 92121  
PH: 858-547-0700

**Nevada**

6355 W Maule Ave, Ste 100  
Las Vegas, NV 89118  
PH: 702-364-2606

**New York**

18-28 42nd Street  
Astoria, NY 11105  
PH: 212-259-0440

**North Carolina**

1020 Crews Rd, Ste Q & P  
Matthews, NC 28105  
PH: 704-841-4080

**Ohio**

100 W Old Wilson Bridge Rd, Ste 201  
Columbus, OH 43085  
PH: 440-444-3550

**Oregon**

14325 NE Airport Way, Ste 101  
Portland, OR 97230  
PH: 503-252-4423

**Texas**

2500 S. Hwy 183, Bldg 4, Ste 400  
Austin, TX 78744  
PH: 512-910-4500

**Texas**

1718 N Fry Rd, Suite #118  
Houston, TX 77041  
PH: 281-456-3421

**Washington**

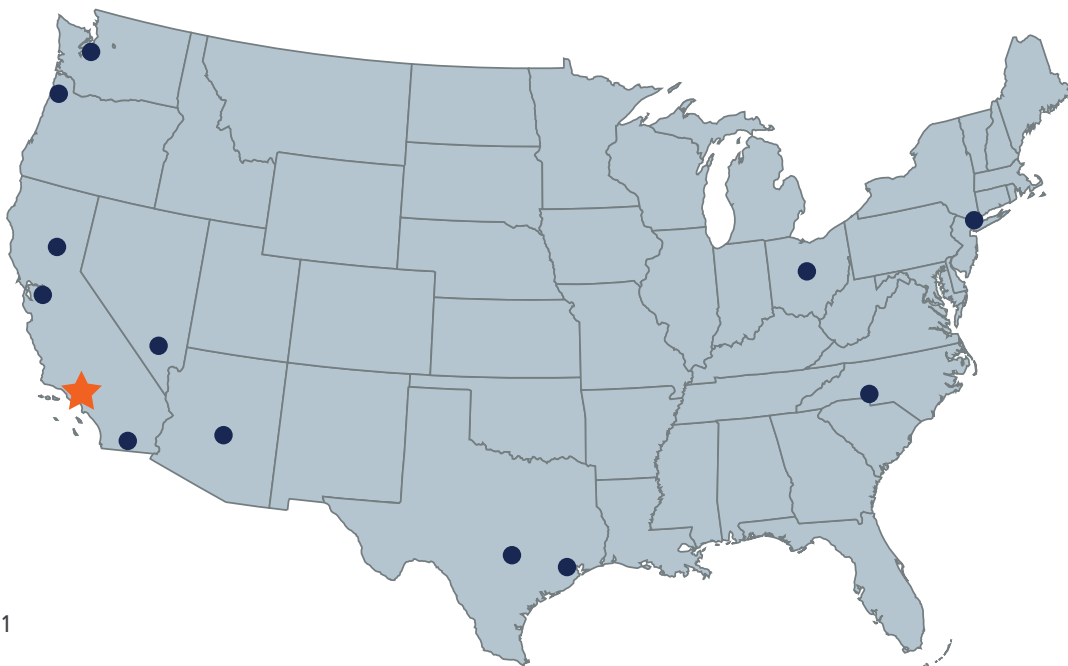
3107 142nd Ave East, Ste 102  
Sumner, WA 98390  
PH: 253-926-2250



**America's #1 Patented Deck Anchor Inserts**

Concrete Steel Decks • Wood Formed Concrete Decks • No Concrete Steel Decks

US Pat #'s 6,240,697 B1 - 7,093,400 B1



**CORPORATE HEADQUARTERS**

Inside US: 877-999-ISAT (4728)

Outside US: 00-1-714-880-3024

SERVICES@ISATTS.COM | ISATTS.COM

16050 Canary Ave., La Mirada, CA 90638



Serving the Construction Industry Since 1977

©2025 ISAT Total Support - All Rights Reserved